

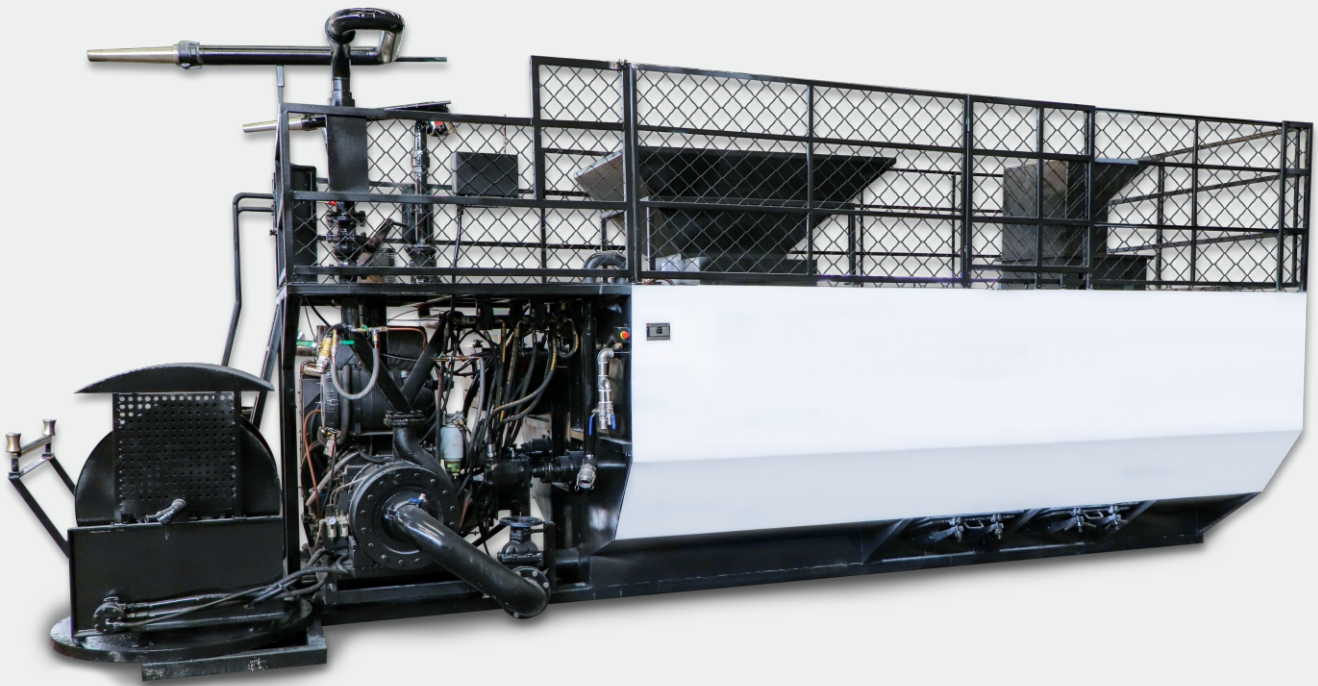


GAODETEC

Hydroseeding Equipment

We full strive for shared NORMS and VALUES:

- Safety and Stringent quality control
- Maneuverability and Operator comfort
- Reliability
- Technical sophistication & after-sales full support



GAODE EQUIPMENT CO., LTD.

COMPANY PROFILE

Gaode Equipment Co.,Ltd. short name Gaodetec, is a manufacturer specialized in R&D, manufacturer and sale of hydroseeding machine.

GHS series hydroseeding machine is driven by diesel engine, tank capacity has 2000L, 3000L, 6000L, 8000L, 13000L and 15000L tank capacity for option. They are with an exclusive pump to handle the thickest slurries.

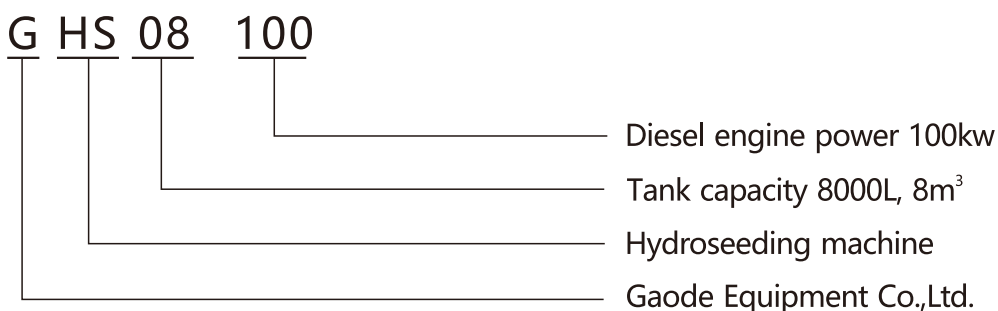
Compared with other hydroseeders, GHS hydroseeding machine with following outstanding features:

- **Powerful diesel engine:** Cummins or Yuchai etc. famous brand diesel engine. Powerful, low fuel consumption, low maintenance cost. Powerful engine, ensure an evenly mixing and also improves the spraying efficiency.
- **Powerful mixing shaft:** Strong mixer shaft, also suitable for thick material.
- **High configurations:** 13000L or bigger hydroseeders with twin agitators, twin cannons etc.
- **High production:** Wear-resisting centrifugal pump, most efficient during working.
- **High density material:** Soil substrate, green grass seed, water retention agent, binder, fertilizer and water. The solids could up to 60%.
- **Long distance of spraying:** suitable for long and high spraying distance. Solids up to 60%, level distance could up to 100m by hose.
- **Hydraulic hose reel:** customize according to demands.
- **Extreme Efficiency:** Simple control panel, easy operation.
- **High quality structural steel:** More durable, a longer working life. Also have stainless steel tank and pipeline for option.

GHS hydroseeding machine is ideal equipment for ground & soil management, could be used for:

Seeding	Golf courses	Mine and oilfield reclamation
Erosion control	Turf	Fire suppression
Dust control	Land restoration	Forest fire recovery
Landfill cover	Roadside construction	Remote Watering
Landscaping	Pipelines	Fertilizing

MODEL DEFINITION



GHS15190 Hydroseeder

GHS15190 is a new, big capacity, wide applicability, simple operation and maintenance hydroseeder.

- More horsepower with high efficiency: 190kw Cummins diesel engine, Industrial grade Air-controlled large torque clutch;
- Specially design centrifugal pump: 6"x3", capacity 120m³/h;
- Spraying distance of up to 85m from cannon;
- Dual cannons design for spraying on both sides of the machine for hard-to reach areas;
- Swivelable hydraulic hose reel with reel in and reel out functionality;
- Twin mechanical agitators with helical paddle orientation and liquid recirculation;
- Removable hoppers for mulch hatch and normal fill well;
- Centralized electronic control to improve work efficiency;
- Wireless remote control make operate more easily during work.

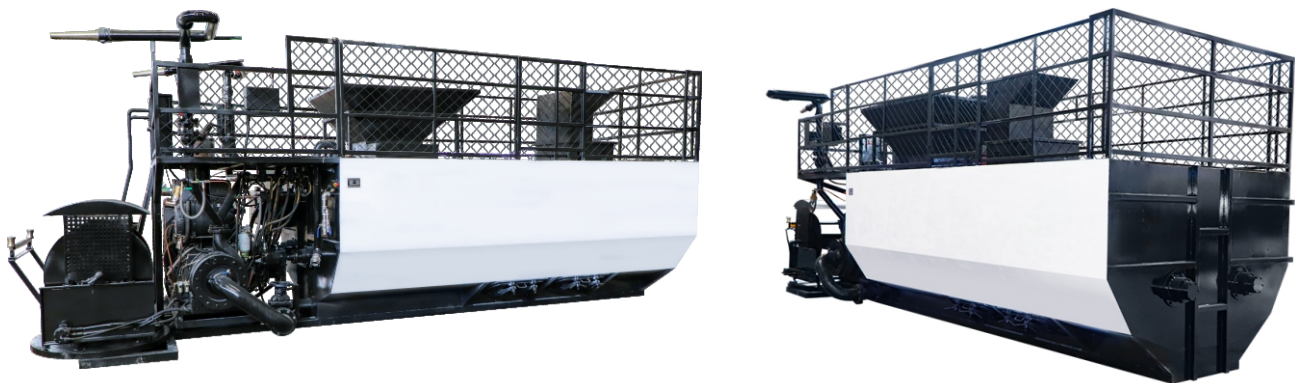


Model	GHS15190	
Power	190KW, Cummins engine, water-cooled	
Tank Size	Liquid capacity: 15000L	Working capacity: 13500L
Pump	Centrifugal pump:6"x3" (15.2X7.6cm), 120m ³ /h@14bar, 32mm solid clearance	
Agitation	Twin mechanical agitators with helical paddle orientation and liquid recirculation	
Rotating speed of mixer shaft	0-130rpm	
Maximum horizontal conveying distance	85m	
Spraying guns type	fixed standing gun and pipe gun	
Height of fence	1100mm	
Dimensions	7200x2500x2915mm	
Weight	8500kg	
Options	Stainless steel material for whole unit Hose Reel with hose Remote control unit	

GHS13190 Hydroseeder

GHS13190 is a new, big capacity, wide applicability, simple operation and maintenance hydroseeder.

- More horsepower with high efficiency: 190kw Cummins diesel engine, Industrial grade Air-controlled large torque clutch;
- Specially design centrifugal pump: 6"x3", capacity 120m³/h;
- Spraying distance of up to 85m from cannon;
- Dual cannons design for spraying on both sides of the machine for hard-to reach areas;
- Swivelable hydraulic hose reel with reel in and reel out functionality;
- Twin mechanical agitators with helical paddle orientation and liquid recirculation;
- Removable hoppers for mulch hatch and normal fill well;
- Centralized electronic control to improve work efficiency;
- Wireless remote control make operate more easily during work.

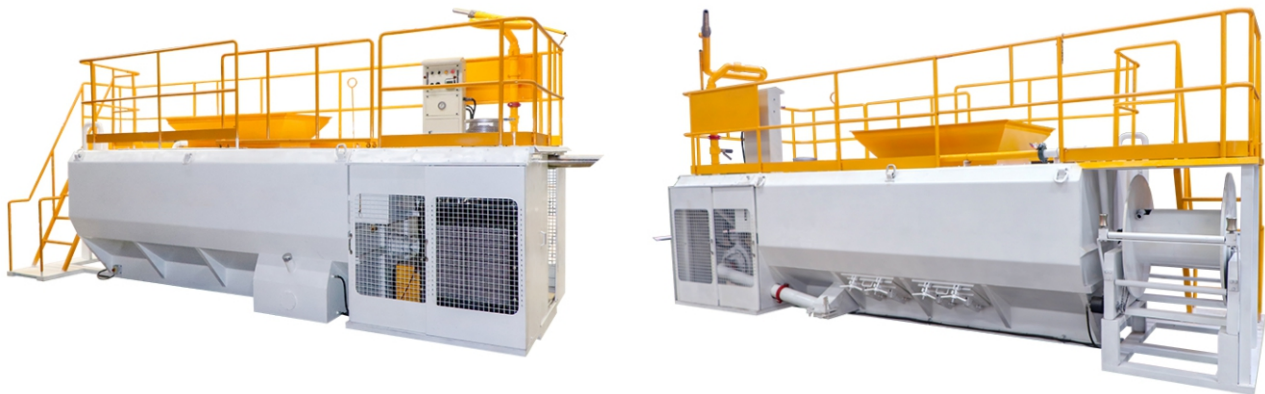


Model	GHS13190	
Power	190KW, Cummins engine, water-cooled	
Tank Size	Liquid capacity: 13000L	Working capacity: 11700L
Pump	Centrifugal pump:6"x3" (15.2X7.6cm), 120m ³ /h@14bar, 32mm solid clearance	
Agitation	Twin mechanical agitators with helical paddle orientation and liquid recirculation	
Rotating speed of mixer shaft	0-130rpm	
Maximum horizontal conveying distance	85m	
Spraying guns type	fixed standing gun and pipe gun	
Height of fence	1100mm	
Dimensions	7200x2500x2915mm	
Weight	8000kg	
Options	Stainless steel material for whole unit Hose Reel with hose Remote control unit	

GHS08100 and GHS06100 Hydroseeder

GHS08100 and GHS06100 are designed for mid to larger-sized hydroseeding projects. From large residential and commercial properties, highway roadsides, industrial parks, sports fields, mine reclamation sites and more, the two types are an economical choice for performance and production.

- More horsepower with high efficiency: 104kw Cummins diesel engine, Industrial grade Air-controlled large torque clutch;
- With engine protection door and ventilation;
- Specially design centrifugal pump: 5"x3", capacity 90m³/h;
- Spraying distance of up to 70m from cannon;
- Swivelable hydraulic hose reel with reel in and reel out functionality;
- Agitator with helical paddle orientation and liquid recirculation;
- With ground level control box with start and stop controls;
- With emergency stop button on top and ground level to shutdown engine in emergency;
- With 100L clean water flush tank.



Model	GHS08100	GHS06100
Power	100KW, Cummins engine, water-cooled	
Tank Size	Liquid capacity: 8000L Working capacity: 7300L	Liquid capacity: 6000L Working capacity: 5500L
Pump	Centrifugal pump: 5"x3" (12.6X7.6cm), 90m ³ /h@11bar, 20mm solid clearance	
Agitation	mechanical agitator with helical paddle orientation and liquid recirculation	
Rotating speed of mixer shaft	0-110rpm	
Maximum horizontal conveying distance	70m	
Spraying guns type	fixed standing gun and pipe gun	
Height of fence	1100mm	
Dimensions	5800x2100x2750mm	
Weight	5000kg	4500kg
Options	Stainless steel material for whole unit Hose Reel with hose Remote control unit	

GHS0883 and GHS0683 Hydroseeder

GHS0883 and GHS0683 are designed for mid to larger-sized hydroseeding projects. From large residential and commercial properties, highway roadsides, industrial parks, sports fields, mine reclamation sites and more, the two types are an economical choice for performance and production.

- 83kw China brand diesel engine, electromagnetic clutch;
- Specially design centrifugal pump: 5"x2.5", capacity 80m³/h;
- Spraying distance of up to 65m from cannon;
- Agitator with helical paddle orientation and liquid recirculation.



Model	GHS0883	GHS0683
Power	83KW, China Yuchai diesel engine, water-cooled	
Tank Size	Liquid capacity: 8000L Working capacity: 7300L	Liquid capacity: 6000L Working capacity: 5500L
Pump	Centrifugal pump: 5"x2.5" (12.6X6.3cm), 80m ³ /h@10bar, 20mm solid clearance	
Agitation	mechanical agitator with helical paddle orientation and liquid recirculation	
Rotating speed of mixer shaft	0-110rpm	
Maximum horizontal conveying distance	65m	
Spraying guns type	fixed standing gun and pipe gun	
Height of fence	1100mm	
Dimensions	5800x2150x2750mm	
Weight	5000kg	4500kg
Options	Stainless steel material for whole unit Remote control unit	Hose Reel with hose Trailer

GHS0353 Hydroseeder

GHS0353 is one mid-size hydroseeding machine what used for large residential and commercial projects, apartment, office building, industrial parks and more other efficient, cost effective and profitable applications.

- 53kw China brand diesel engine, water-cooled;
- Specially design centrifugal pump: 4"x2", capacity 70m³/h;
- Spraying distance of up to 60m from cannon;
- With hydraulic hose reel with reel in and reel out functionality;
- Agitator with helical paddle orientation and liquid recirculation.



Model	GHS0353	
Power	53KW, China Yuchai diesel engine, water-cooled	
Tank Size	Liquid capacity: 3000L Working capacity: 2550L	
Pump	Centrifugal pump:4"x2" (10X5cm), 70m ³ /h@7bar, 10mm solid clearance	
Agitation	mechanical agitator with helical paddle orientation and liquid recirculation	
Rotating speed of mixer shaft	0-110rpm	
Maximum horizontal conveying distance	60m	
Spraying guns type	fixed standing gun and pipe gun	
Height of fence	1100mm	
Dimensions	3350x2030x2600mm 4800x2100x2900mm with trailer	
Weight	2950kgs/3500kgs with trailer	
Options	Stainless steel material for whole unit Remote control unit	Hose Reel with hose Trailer

GHS0230 Hydroseeder

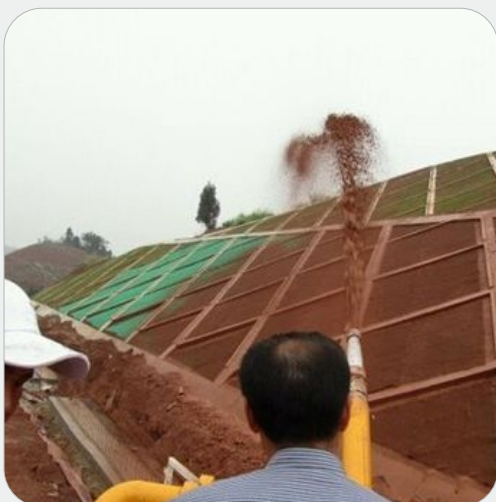
GHS0230 is one hydroseeding machine for small to mid-size hydroseeding projects on residential and commercial projects, sports fields, apartment and office buildings, golf courses, parks and more other efficient, cost effective and profitable applications.

- 30kw China brand diesel engine, water-cooled/Air cooled;
- Specially design centrifugal pump: 3"x1.5", capacity 45m³/h;
- Spraying distance of up to 50m from cannon;
- With hydraulic hose reel;
- Agitator with helical paddle orientation and liquid recirculation.

Model	GHS0230	
Power	30KW, Chinese brand engine, water-cooled	
Tank Size	Liquid capacity: 2000L Working capacity: 1700L	
Pump	Centrifugal pump: 3"x1.5" (7.5X3.75cm), 45m ³ /h@5bar, 10mm solid clearance	
Agitation	mechanical agitator with helical paddle orientation and liquid recirculation	
Rotating speed of mixer shaft	0-110rpm	
Maximum horizontal conveying distance	50m	
Spraying guns type	fixed standing gun and pipe gun	
Height of fence	1100mm	
Dimensions	3350x2030x2600mm 4800x2100x2900mm with trailer	
Weight	2950kgs/3500kgs with trailer	
Options	Stainless steel material for whole unit Remote control unit	Hose Reel with hose Trailer

Model	Power	Tank Size	Pump	Agitation	Rotating speed of mixer shaft	Maximum horizontal conveying distance	Dimensions	Weight
GHS15190	190KW, Cummins engine, water-cooled	Liquid capacity: 15000L Working capacity: 13500L	Centrifugal pump: 6"x3" (15.2X7.6cm), 120m³/h@14bar, 32mm solid clearance	Twin mechanical agitators with helical paddle orientation and liquid recirculation	0-130rpm	85m	7200x2500x2915mm	8500kg
GHS13190		Liquid capacity: 13000L Working capacity: 11700L					7200x2500x2915mm	8000kg
GHS08100	100KW, Cummins engine, water-cooled	Liquid capacity: 8000L Working capacity: 7300L	Centrifugal pump: 5"x3" (12.6X7.6cm), 90m³/h@11bar, 20mm solid clearance	Mechanical agitator with helical paddle orientation and liquid recirculation	0-110rpm	70m	5800x2100x2750mm	5000kg
GHS06100		Liquid capacity: 6000L Working capacity: 5500L					5800x2100x2750mm	4500kg
GHS0883	83KW, Chinese brand engine, water-cooled	Liquid capacity: 8000L Working capacity: 7300L	Centrifugal pump: 5"x2.5" (12.6X6.3cm), 80m³/h@10bar, 20mm solid clearance			65m	5800x2150x2750mm	5000kg
GHS0683		Liquid capacity: 6000L Working capacity: 5500L					5800x2150x2750mm	4500kg
GHS0353	53KW, Chinese brand engine, water-cooled	Liquid capacity: 3000L Working capacity: 2550L	Centrifugal pump: 4"x2" (10X5cm), 70m³/h@7bar, 10mm solid clearance			60m	3350x2030x2600mm	2950kg
GHS0230	30KW, Chinese brand engine, water-cooled	Liquid capacity: 2000L Working capacity: 1700L	Centrifugal pump: 3"x1.5" (7.5X3.75cm), 45m³/h@5bar, 10mm solid clearance				3350x2030x2600mm	2950kg

Options: Stainless steel material for whole unit, Hose Reel with hose, Remote control unit, Trailer etc.



Gaode Equipment Co., Ltd.

Add: No.9, Building 14, Yard No. 4, Fengqing Road, Jinshui District,
Zhengzhou, Henan China

P. C. : 450053

Tel: +86-371-55951660

Mobile/WhatsApp/Viber: +86-13939067523

Email: info@gaodetec.com

Website: www.gaodetec.com

