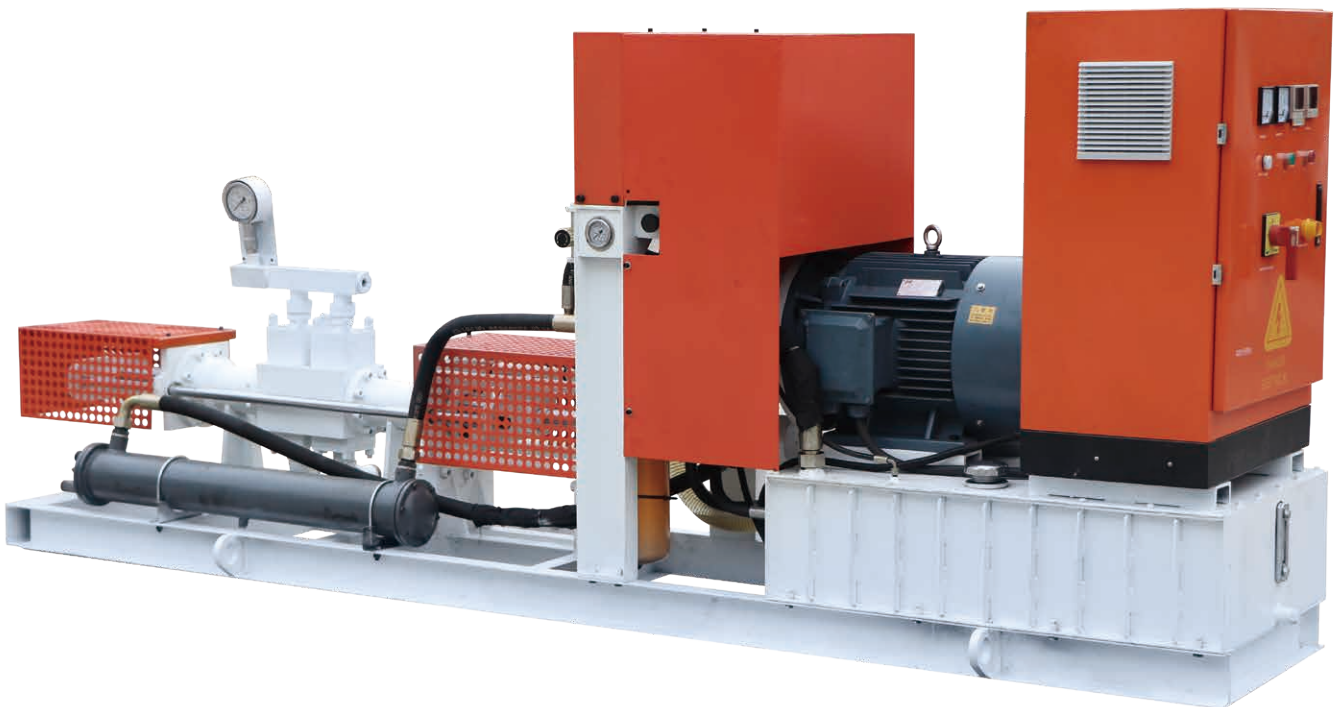




GGH95/165PL-E

HIGH PRESSURE GROUT PUMP



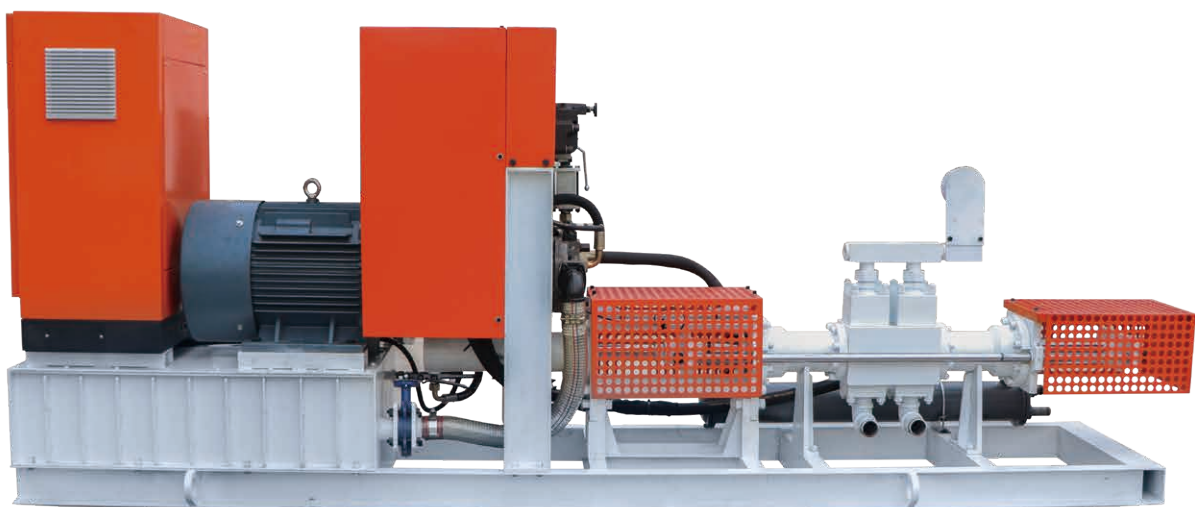
GAODE EQUIPMENT CO., LTD.

PRODUCT DESCRIPTION:

GGH95/165PL-E High Pressure Grout Pump is an horizontal hydraulic pump used for pumping fluid mixtures, such as cement slurry or bentonite slurry, ect. For injecting in the sub-soil for soil consolidation, piling or even for long transport of material. The equipment adopts two pieces of High Pressure Plungers to stabilize the consistency of the grouting flow. Grouting pressure and displacement is step-less adjustable. Compact size and it is easy to operate. It also takes up a small space.

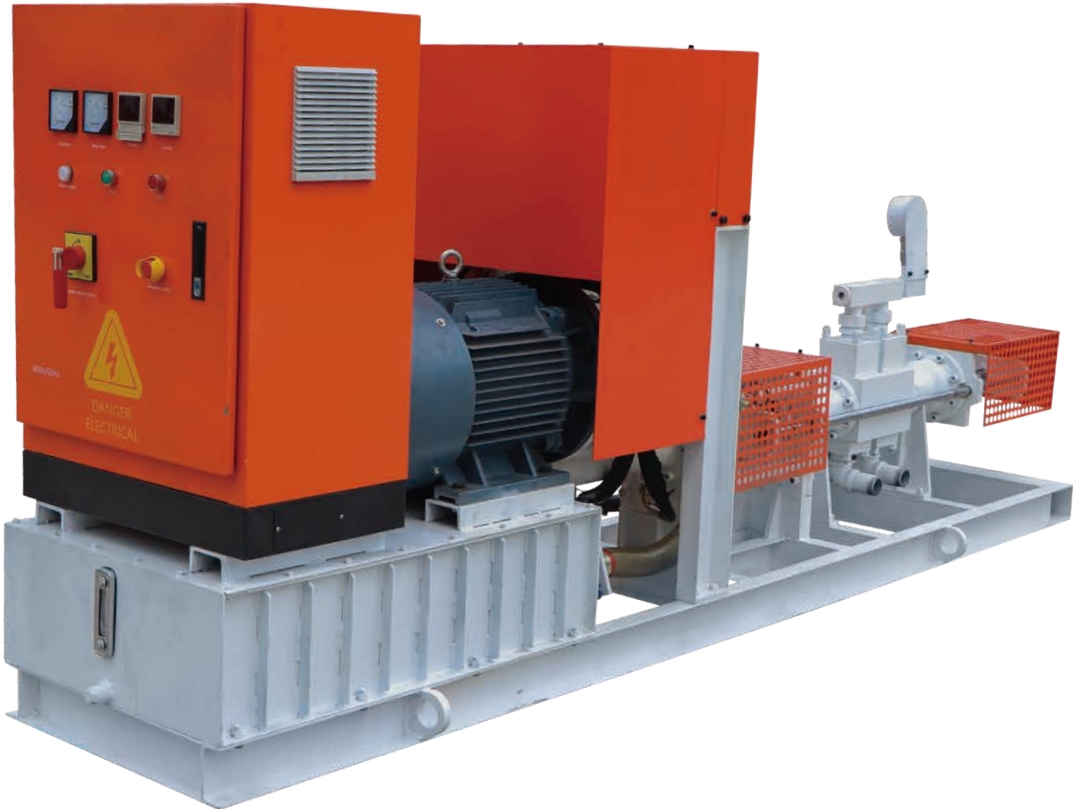
PRODUCT FEATURE:

- ★ Grouting pressure, displacement is step-less adjustable;
- ★ Simple structure, light weight, easy maintenance;
- ★ Double grouting plungers, continuous output flow with less pulse;
- ★ Less spare parts ensure low maintenance costs;
- ★ With the function of record and display grouting pump reciprocating times by a counter;
- ★ The motor has an overload protection function. Hydraulic system with oil temperature overheating protection;
- ★ Electric motor and hydraulic driven. Anytime, overpressure occurred, the hydraulic safety protection will be worked.

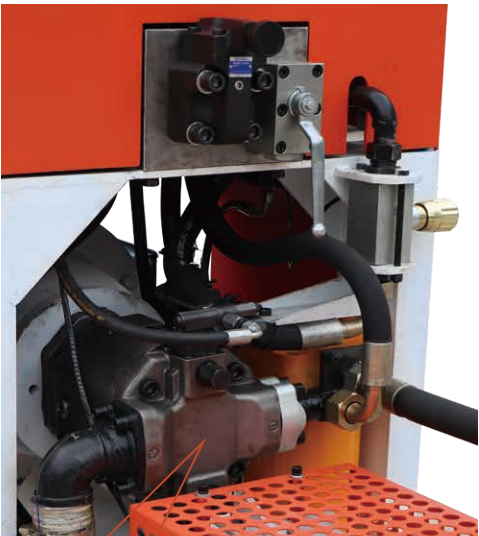
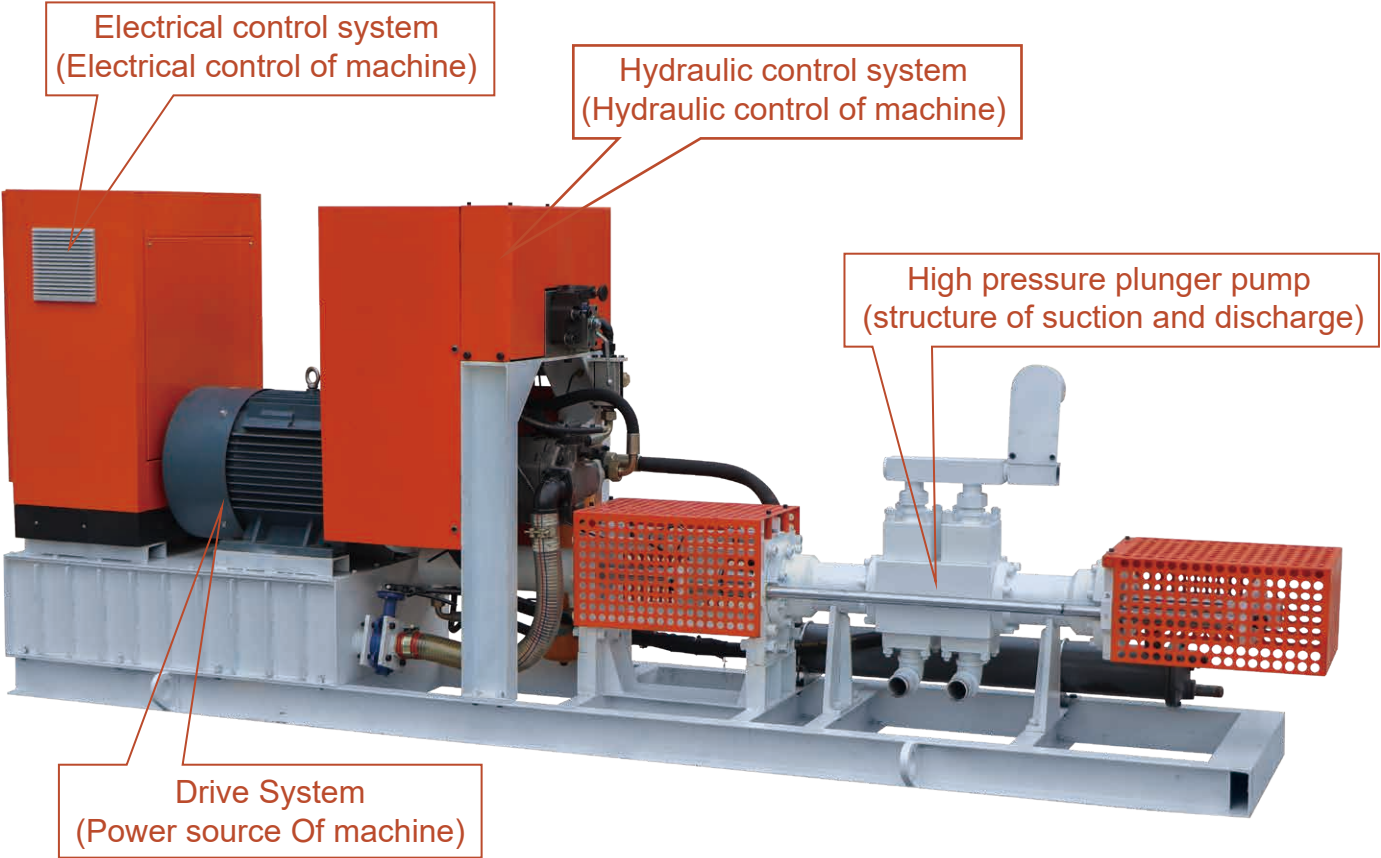


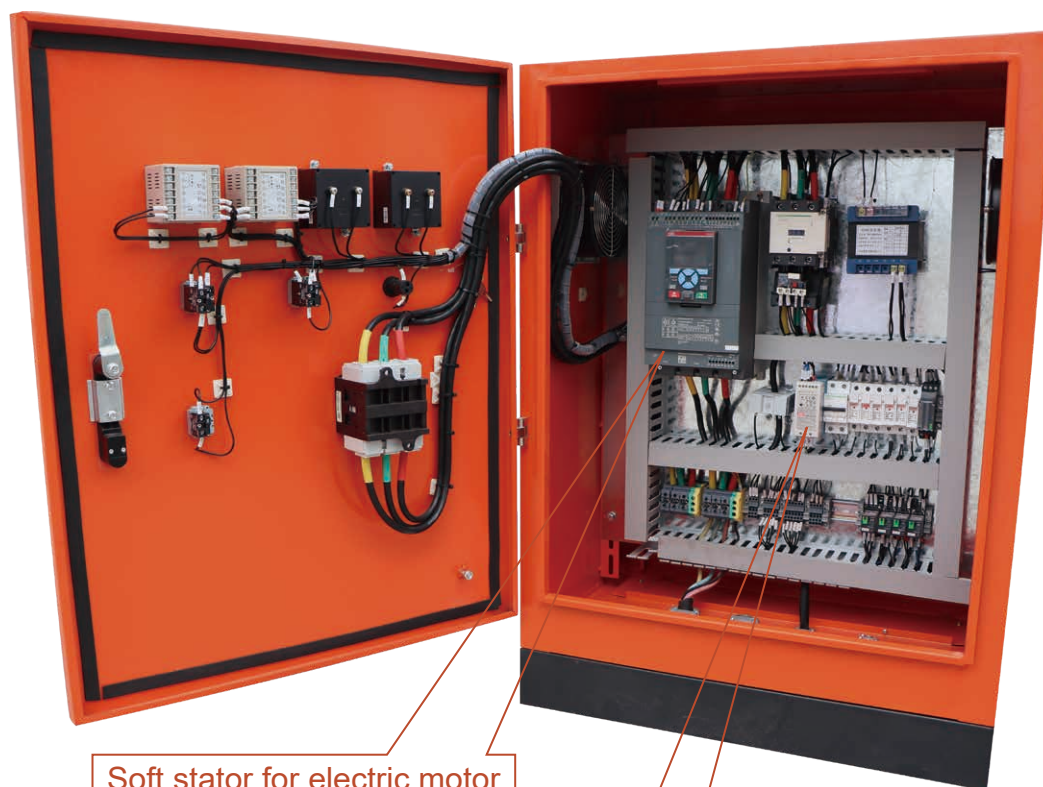
PRODUCT SPECIFICATION:

Description	Date
Type	GGH95/165PL-E
Plunger diameter	85 mm
Plunger stroke	300 mm
Adjustable pressure	0-16.5 MPa
Adjustable flow rate	0-95 L/min
Discharge pipe size	G1 1/4"
Inlet pipe size	G2"
Oil tank	200 L
Power Unit	37 Kw, 3-400V, 50 Hz
Max. grain size	2 mm
Working pressure	16.5 MPa
Weight	1400 kg
Overall dimensions	3760x1480x750 mm
We also could according to your demands to customize	



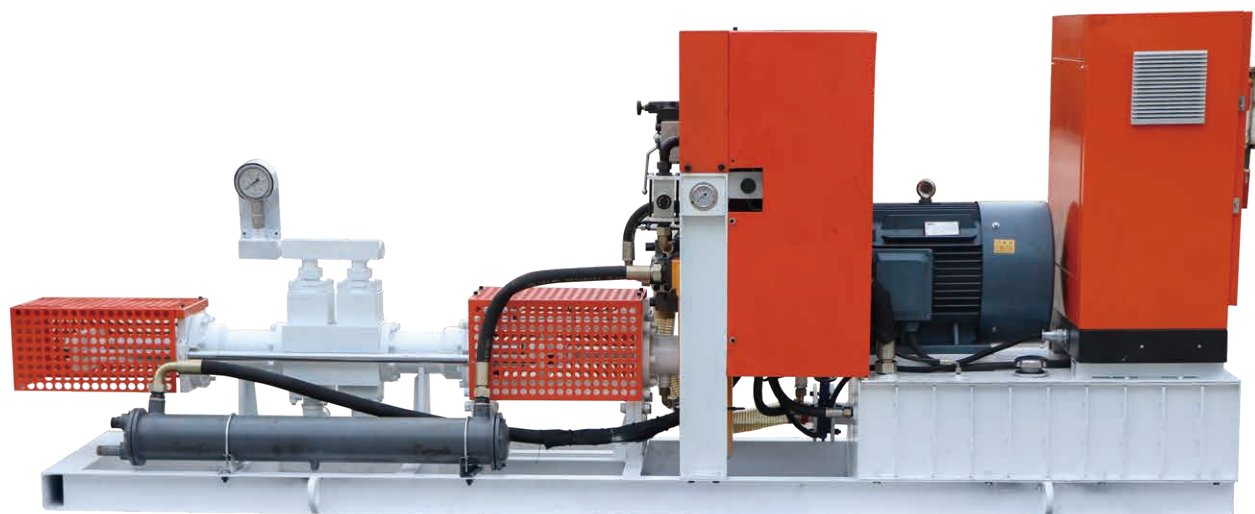
DETAIL PART:





Soft stator for electric motor

Phase sequence relay



Gaode Equipment Co., Ltd.

Add: No.9, Building 14, Yard No.4, Fengqing Road, Jinshui District,
Zhengzhou, Henan China

P.C.: 450000

Tel: +86-371-55951660 Fax: +86-371-63526676

Email: info@gaodetec.com