



MAT200/300/60 Grout Station

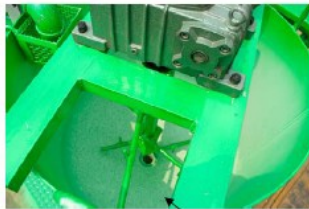
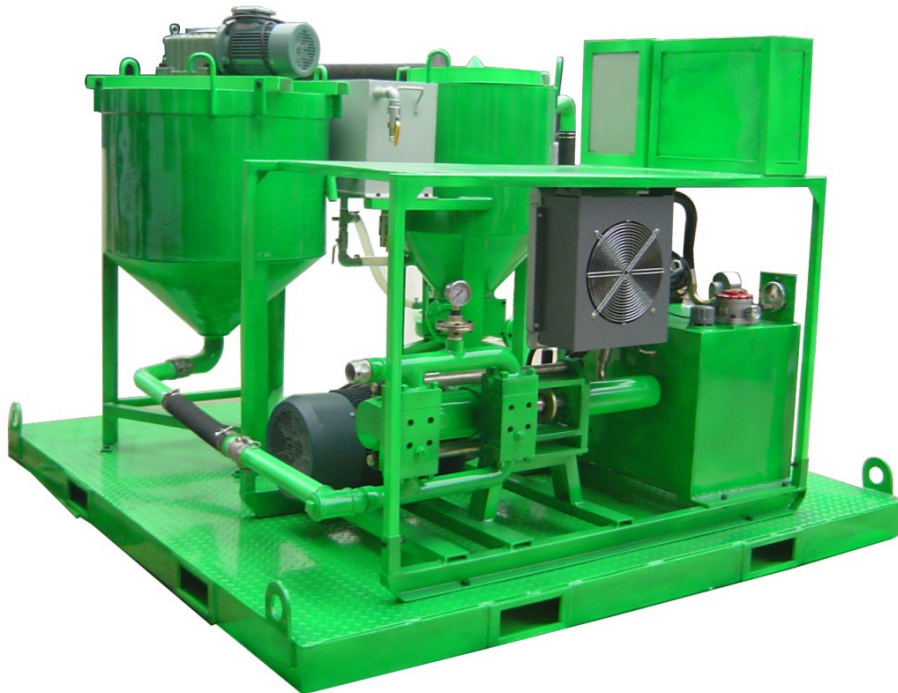
Feature

1. It is combination of mixer, agitator and hydraulic grout pump in one base frame.
2. Siemens electric motor(WEG electric motor is optional)
3. Schneider component for electric control box.
4. Yuken reversing valve for hydraulic system of grout pump
5. Butterfly valve of mixer and agitator.
6. Linked switch between mixer and agitator.
7. Oil temperature gauge can automatically control cooler fan working in normal temperature range, if temperature is too high, the machine will stop work automatically.

Technical data

Description	Data
Grout Station type	MAT200/300/60
Mixer Volume	200L
Mixer production(w/c ratio=1)	4 m ³ /h
Circulation capacity	1100l/min
Suitable W/C Ratio	0.5 to 1
Mixer electric motor power	7.5kw, 1450rpm
Agitator Volume	300L
Agitator Speed	36rpm
Agitator electric motor power	1.5kw, 1450rpm
Water tank	60L
Grout Pump Type	GDH90
Grout pump output(Max.)	100L/min
Grout pump work pressure	10MPa (100bar)
Grout pump electric motor power	11kw, 1450rpm
Grout Station Overall dimension	2400x2300x1620mm
Grout Station Weight	1320kgs

Pictures in different angle and detailed parts



300L Agitator

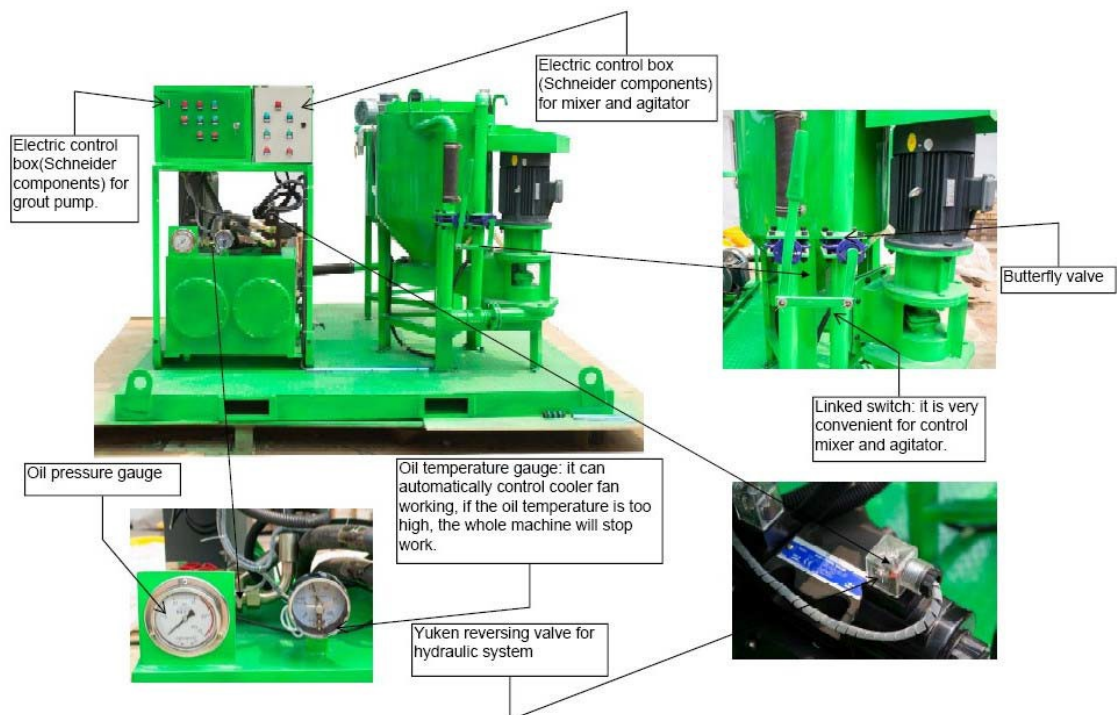


60L Water tank



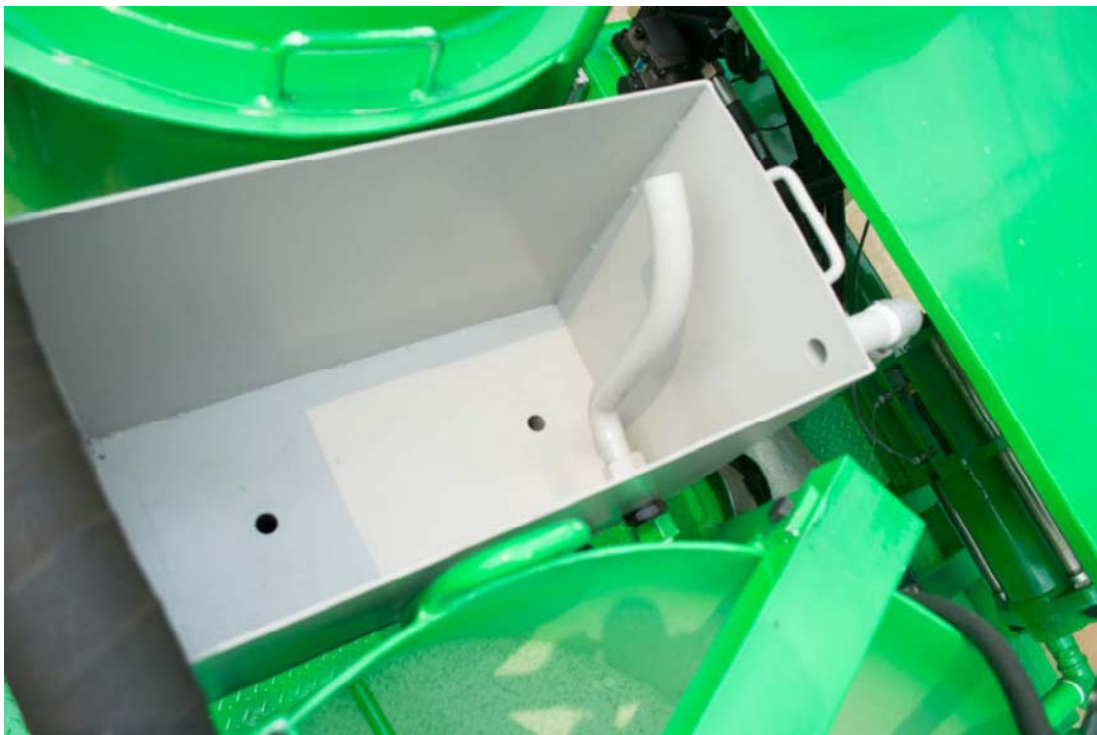
200L Mixer

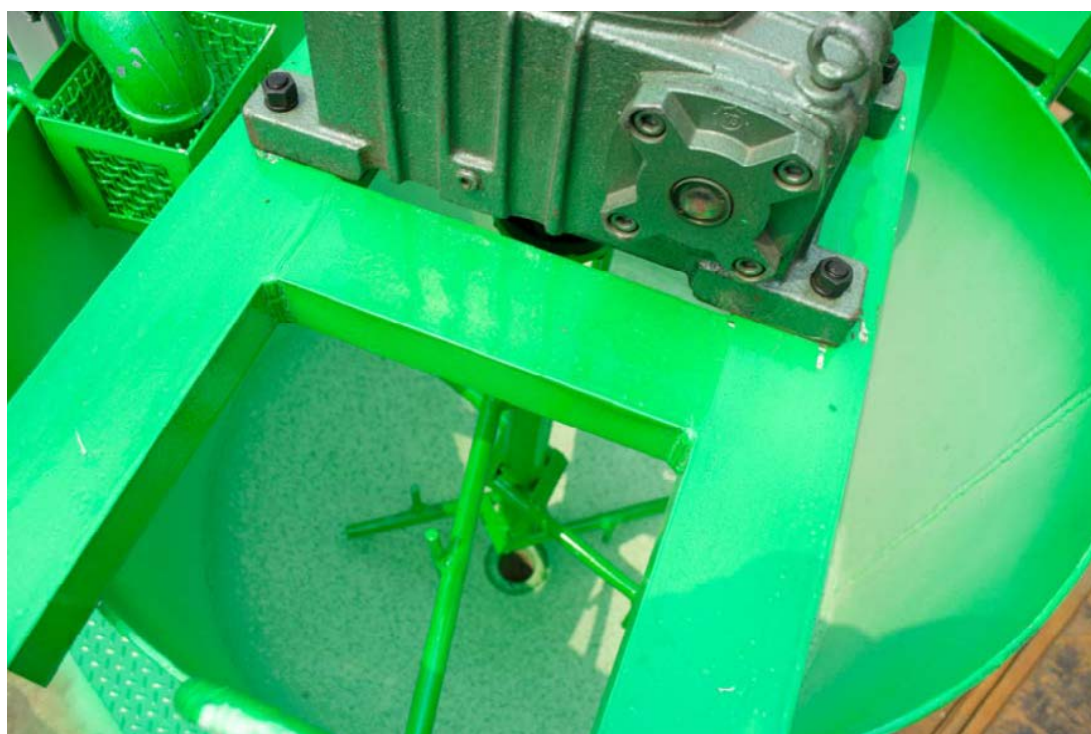












CE certification

	
VERIFICATION OF MD&LVD COMPLIANCE	
Reference No. :	CE-13-0618-01
Applicant :	GAODE EQUIPMENT CO.,LTD.
Address of Applicant :	Tianming Shangwu Building, No.2-1, Tianming Road, Jinshui District, Zhengzhou, China.
Product Name :	Grout station
Model :	MAT200/300/60
Applicable EC Directives :	MD(2006/42/EC)&LVD(2006/95/EC)
Applicable Standards :	EN ISO 12100:2010 EN 60204-1:2006+AC:2010
Date of Issue :	18th Jun 2013
<p>Based upon the voluntary assessment of the product sample and Technical Construction File, the apparatus is deemed to meet the requirements of the above standards and EC directives.</p> <p>The manufacturer has the responsibility for ensuring that all serial manufacture of the products are in compliance with the specification of the sample submitted for assessment and detailed in the technical file.</p>	
Authorized Signatory:	
 	
ECO Information Technology Co., Ltd.	
<p>The CE marking may be used if all relevant and effective EC directives are complied with.</p>	
Website: www.eco-ce.com	
ADD: Room 721-722, Cimic Plaza, No.800 Shangcheng Road, Pudong New Zone, Shanghai 200120 P.R.C	