



GAODETEC

## GGP250/350/100PI-D Hydraulic Grout Station Plant

### Description

GGP250/350/100PI-D Hydraulic Grout Station Plant is a hydraulic driven combination of mixer, agitator and grout pump, it is specially design for continuous cement mixing and grouting in ground/underground engineering. It can fast mix water, cement and additive, then the mixed slurry can be stored into a 300 liters agitator, thus the mixing work can continuously be done.

### Feature

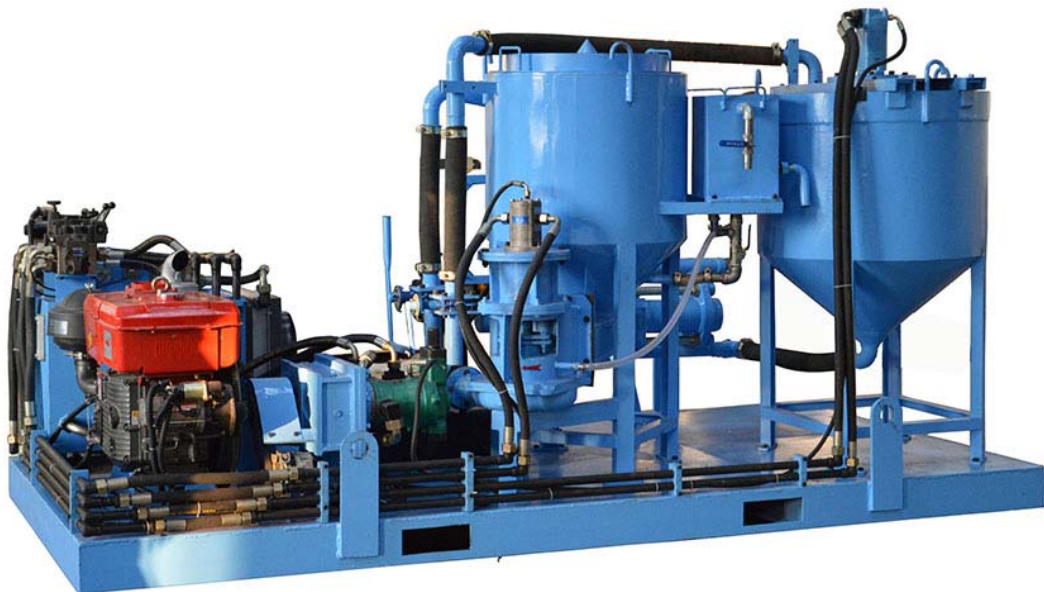
1. Compact size, It is combination of mixer, agitator and piston grout pump in one base frame;
2. Yuken relief valve and directional valve for hydraulic system of grout pump;
3. Butterfly valve of mixer and agitator;
4. Oil temperature gauge can automatically control cooler fan working in normal temperature range, if temperature is too high, the machine will stop work automatically;
5. Operation and maintenance are simple;
6. With ISO, CE certificate.



**Technical data**

Description	Data
Grout Station type	GGP250/350/100PI-D
<b>Mixer</b> Volume	250L
Mixer production(w/c ratio=1)	4 m <sup>3</sup> /h
Circulation capacity	1200l/min
Suitable W/C Ratio	0.5 to 1
<b>Agitator</b> Volume	350L
Agitator Speed	36rpm
Water tank	60L
<b>Grout Pump</b> Type	GDH90
Grout pump output(Max.)	100L
Grout pump work pressure	10MPa
Grout Station Overall dimension	3300x1650x1500mm
Grout Station Weight	1400kgs
Note:MAT250/350/60HD is a combination of mixer, agitator and grout pump in one base frame	

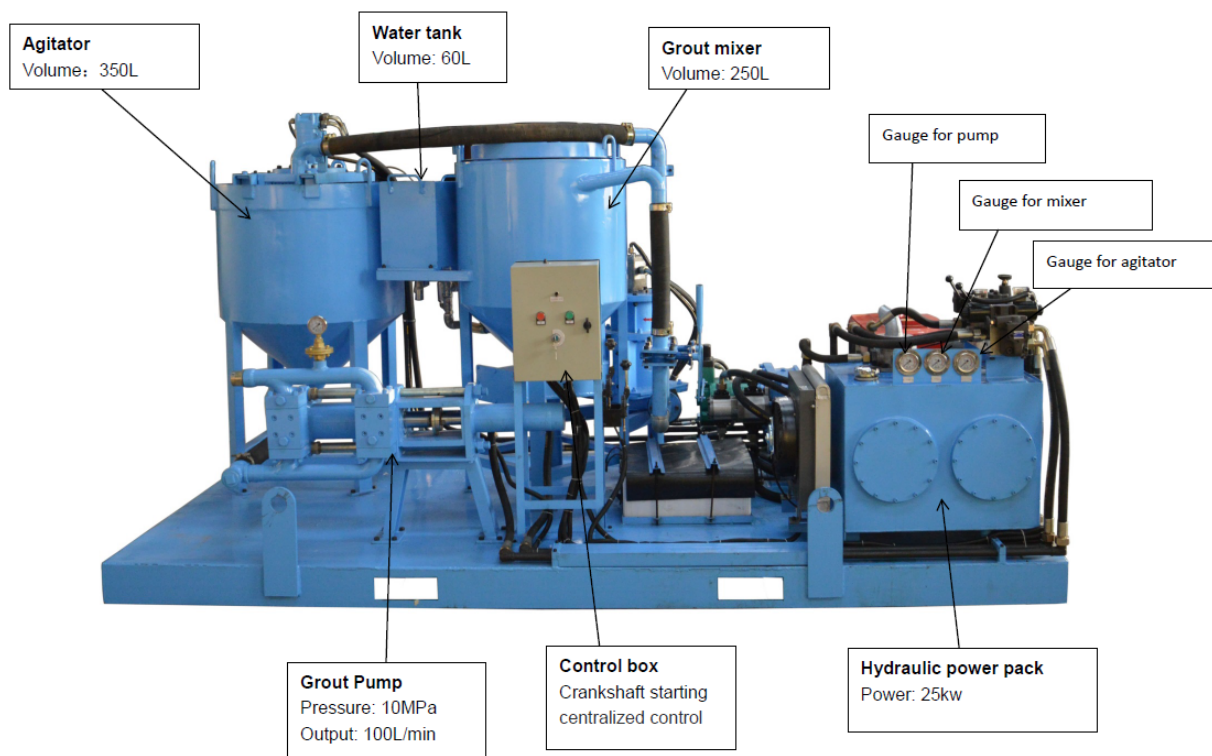
**Pictures in different angles:**

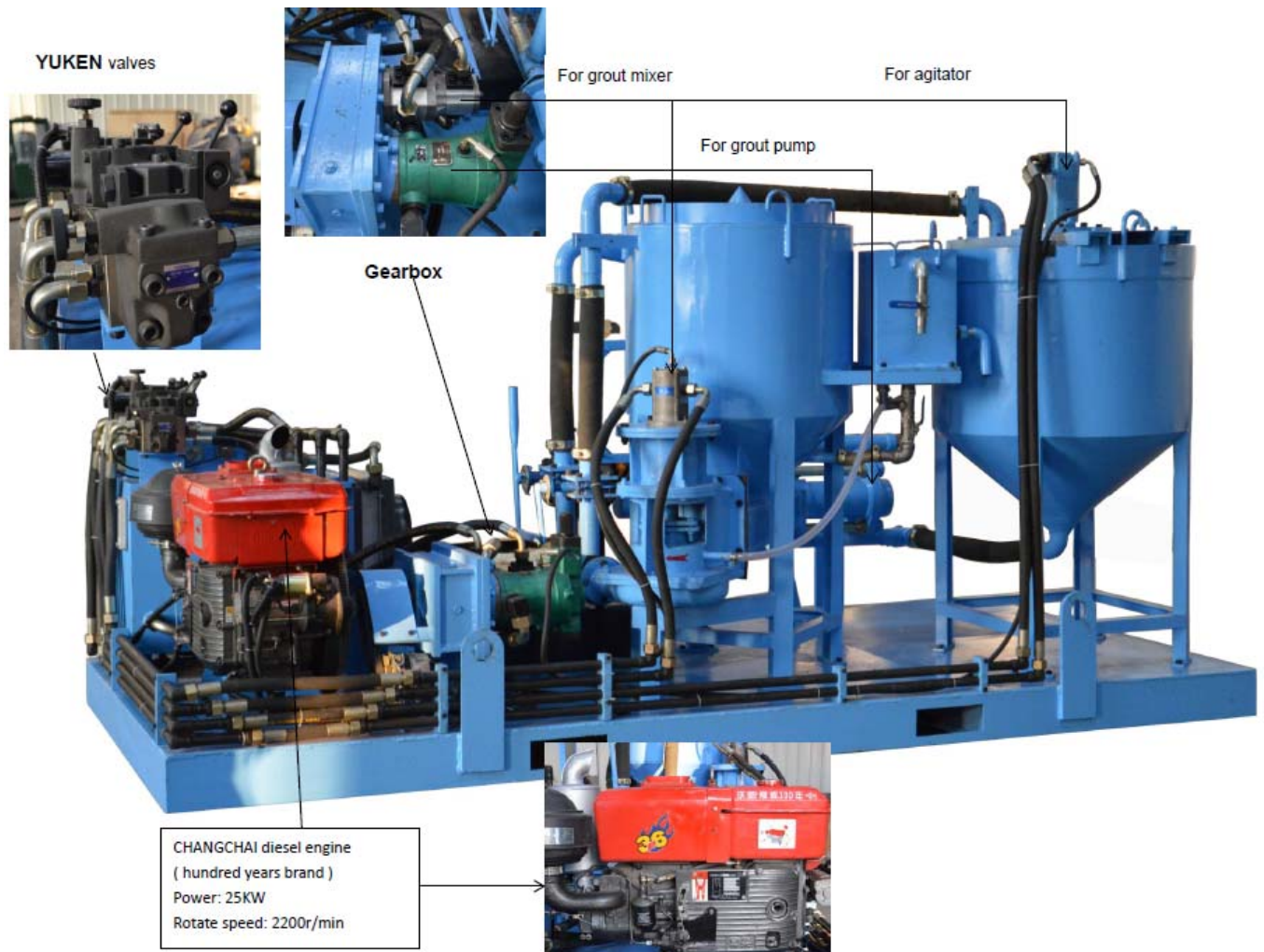






## Detailed parts





郑州高德机械设备有限公司

Gaode Equipment Co.,Ltd.

No.9, Building 14, Yard No.4, Fengqing Road, Jinshui District,  
Zhengzhou,China

Email: [info@gaodetec.com](mailto:info@gaodetec.com)

Web: [www.gaodetec.com](http://www.gaodetec.com)