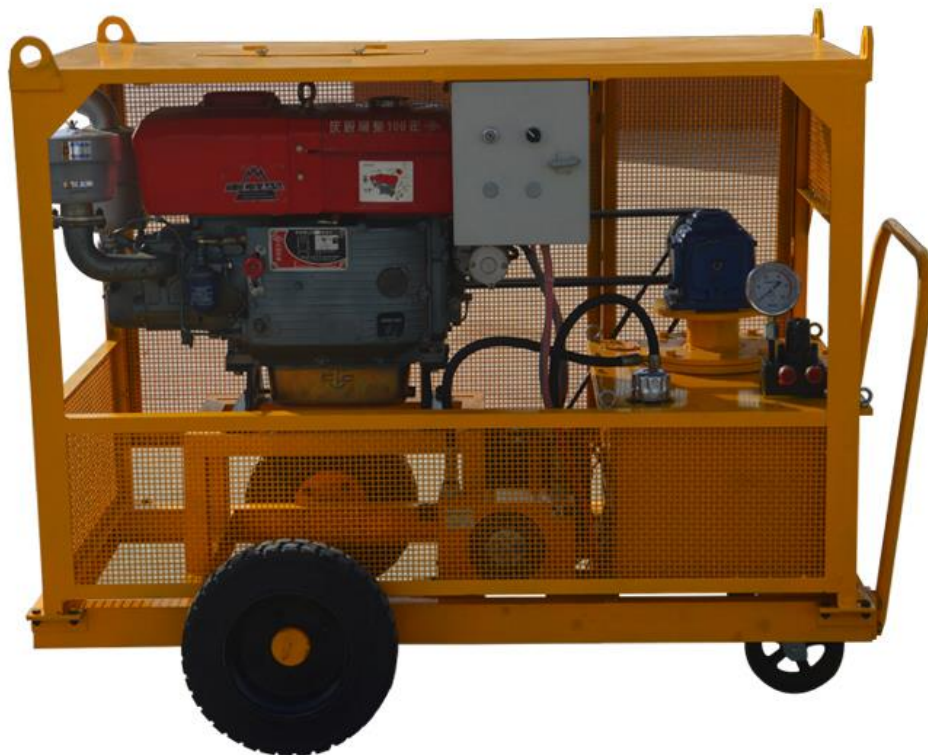


GJP-63D Pump Station

With Diesel Driven



◆ Product Description:

GJP-63D pump station is modified by electric pump station. It is consisted on diesel engine, transmission, control cabinet, air cooling, oil tank, control valve, oil gauge, etc. The pump station matched with varied hydraulic jacks, the device can do kinds of different work, for example, lifting, pulling, pushing, extruding, pressuring and other working type. It is widely used for simple hydraulic press machine (low pressure or high pressure), bridge displacement, falling beam, changing rubber bearing, static test, pile foundation test, non-excavation works, maintenance of large equipment, factory maintenance, etc.

◆ Product Feature

1. Diesel engine driven, electrical starting.
2. Two-way design.
3. Max pressure 70Mpa, working pressure 63Mpa.
4. Heavy-duty power, light weight.
5. Pressure regulating valve for easy adjust system pressure.
6. With frame, convenient for handling and protecting the pump body.
7. With wheels, easy moving.
8. Level gauge for showing oil level in the tank.

◆ Product Specification

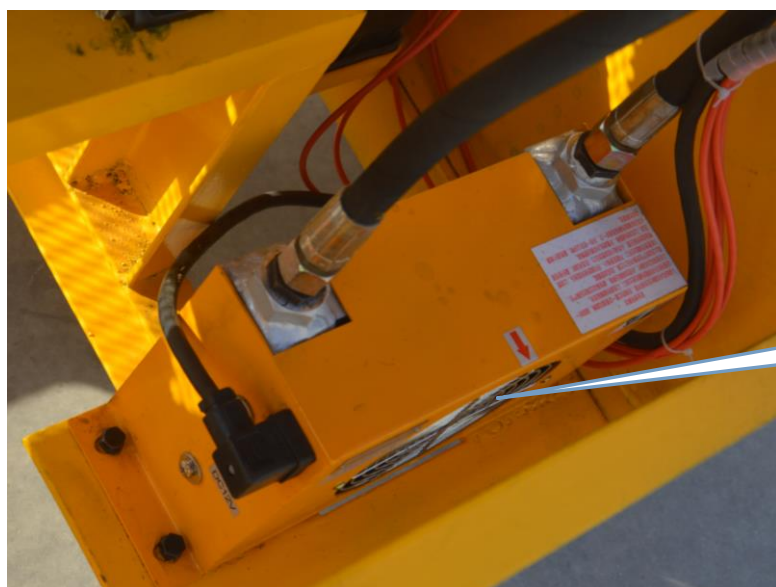
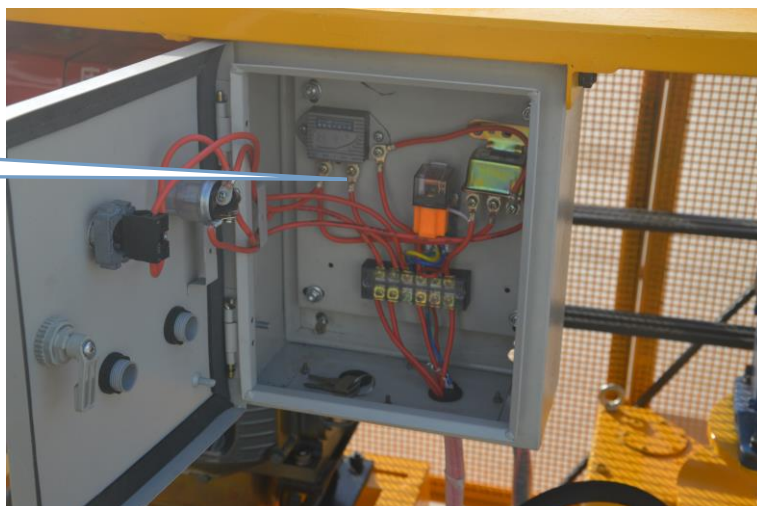
Items		Parameter
Model		GJP-63D
Diesel engine	Brand&model	Changchai L24
	Power	24Hp
	Rotate speed	2200rpm
Max pressure		70Mpa
Working pressure		63Mpa
High pressure flow		5 L/min
Low pressure flow		10 L/min
Oil capacity		90L
Overall Dimension		1800*1100*1250mm
Weight		500kg

◆ Product details



24Hp Changchai diesel engine

Control cabinet

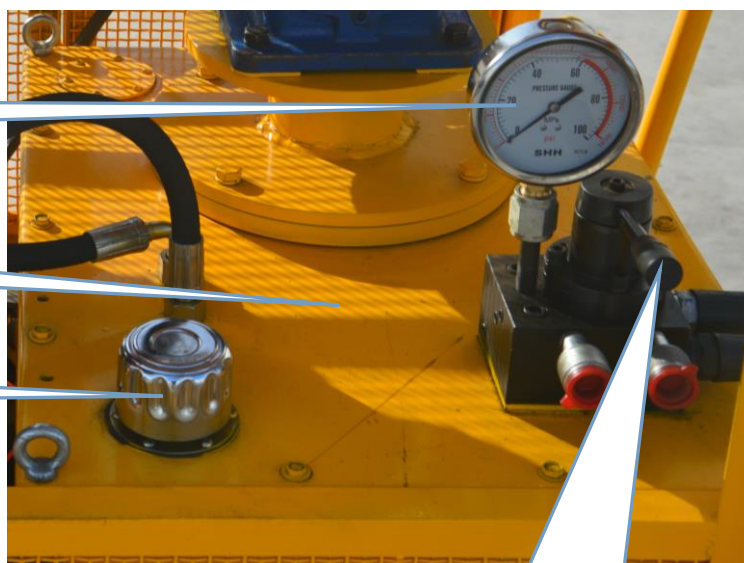


Air cooling

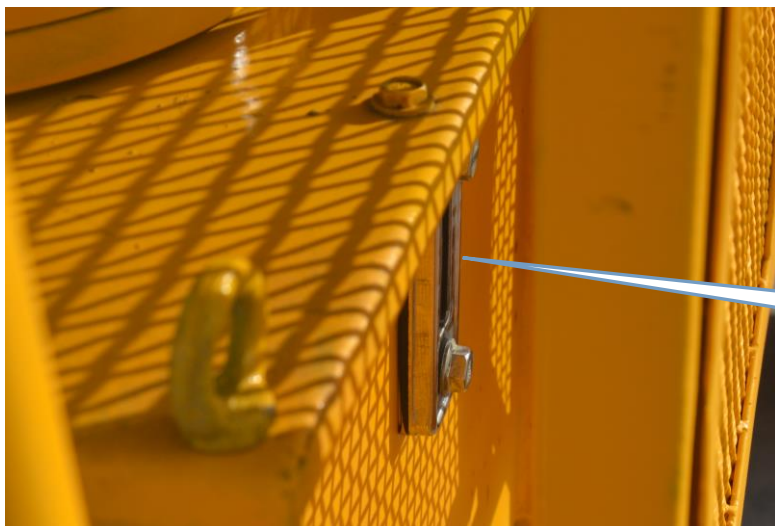
Pressure gauge

Oil tank

Oil inlet



Control valve, two-way



Liquidometer

With 4pcs wheels, easy moving



Gaode Equipment Co., Ltd.

Add: No.9, Building 14, Yard No.4, Fengqing Road, Jinshui District, Zhengzhou, Henan China

P.C.: 450000

Tel:+86-371-55951660 Fax: +86-371-63526676

Email: info@gaodetec.com

Web: www.gaodetec.com