



Distributor

GAODETEC GROUT EQUIPMENT

We full strive for shared NORMS and VALUES:

- Safety and Stringent quality control
- Maneuverability and Operator comfort
- Reliability
- Technical sophistication & after-sales full support



Gaode Equipment Co., Ltd.

No.9, Building 14, Yard No.4, Fengqing Road, Jinshui District,
Zhengzhou, Henan China P.C. 450053

Tel: +86-371-55951660/55951210

Mobile/WhatsApp/Viber: +86-13939067523

Fax: +86-371-63526676

Email: info@gaodetec.com

Website: www.gaodetec.com www.grout-pumps.com



GAODE EQUIPMENT CO., LTD.

COMPANY PROFILE

Gaode Equipment Co., Ltd., short name Gaodetec, is a manufacturer specialized is R&D, manufacture and sale of grout equipment.

Grout Equipment includes: grout plant, grout pump, grout mixer and agitator etc.
Grout plant is a combination of mixer, agitator and grout pump in one plant. The special mixing effect of cement or bentonite with water is archived in mixer by a high turbulence created in the pump casing. This turbulence with its high shear forces separates the cement or bentonite particles which results in a fully hydrated suspension.

As soon as the mixing process is over, the mixing is transferred into the agitator. The slow stirring paddle prevents the grout from settling out of suspension and removes any air bubbles from the mix. Each machine incorporates mixers and pumps of matched capacity which together with an agitated storage tank enable virtually continuous operation once work has commenced.

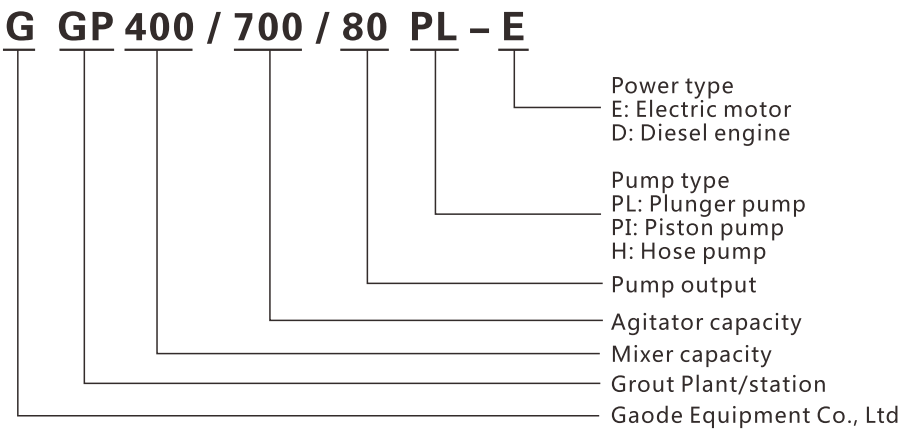
Now we have developed full series of grout plant and grout station, pump including piston type, plunger type and hose type. Mixer volume from 200L to 800L, agitator volume from 300L to 1200L, pump flow from 0 to 200L/min and pressure from 0 to 100 bar. Electric power and diesel power are available for customization.

Grout equipment is specially designed for continuous cement mixing and grouting in ground and underground engineering, such as highway, railway, hydropower, construction, mining. It is widely used in the following field:
Civil engineering - dam, tunnel, subway, mine, soil nailing wall, curtain, anchor, cable trench and anchor grouting;
Building structure - building and bridge repair, foundation reinforcement, slope support, soil compaction, terrg grouting;
Engineering - underwater foundation, offshore platform, coast foundation grouting reinforcement;
Mine application - roadway reinforcement, backfill, waterproof grouting;
Utilities - encasements, waterproofing, slope line grouting;
Geotechnical - deep well casing, monitor wells, well sealing and abandonment acted as a grouting plant in the Pipe Jacking Machine.

Simple structure, light weight, easy maintenance, continuous output with small pulse, stable performance, convenient to operate and with long service life time.

From years of experience Gaode Equipment Co., Ltd. has developed its own R&D and technician teams, which supports further development and customized service for clients.

MODEL DEFINITION



GGP400/700/80DPL-E Grout/Inject Station

- High-speed colloidal grout mixer, with the liquid level of the mixer tank, up to 5mm particle size;
- Double plunger pump, vertical type pump with compact size;
- Hydraulic drive (safely releasing pressure when pumping block);
- Hydraulic system with high temperature warning and protection system;
- Pressure holding system and low flow pressure surge system;
- Air cooler and water cooler (suitable for working in tropical and sub-hot areas).



Type		GGP400/700/80DPL-E
Grout Plant Model	Dimensions	2350*2100*1830mm
	Weight	1530kg
Colloidal Grout Mixer	Capacity	400L
	Recycling pump	1100L/min
	Suitable water/cement ratio	≥0.5:1
	Motor power	7.5kw
Agitator	Rated rev.	1450rpm
	Capacity	700L
	Motor model	1.5kw
Grout Pump	Rated rev.	36rpm
	Output and pressure	0-80L/min, 0-25bar (High-speed)
		0-58L/min, 0-40bar (Low-speed)
Power		11kw

GGP400/700/80/100DPI-D Grout Station

- Grouting pressure and displacement is adjustable;
- The function switch between mixer and pulping machine is realized by using squeeze switch;
- Full hydraulic drive, three cylinders air cooling diesel engine acted as universal grouting applications;
- Easy to operate and maintain;
- Up to 5mm particle size;
- Air cooling and water cooling for the hydraulic.



Type		GGP400/700/80/100DPI-D
Mixer	Volume	400L
	Speed	1500rpm
Agitator	Volume	700L
	Speed	36rpm
Grouting pump	Pump pressure and output	
	40bar@80L/min 100bar@40L/min	
Dimension	Dimension	2480x1 960x1 995mm
	Weight	1965kg

GGP400/700/80DPL-D Grout Station

- High-speed colloidal grout mixer;
- Double plunger pump;
- Vertical type pump with compact size;
- Pressure holding system;
- Low flow pressure surge system;
- Diesel + full hydraulic driven.



Type		GGP400/700/80DPL-D
Mixer	Capacity	400L
	Recycling discharge	1100L/min
	Suitable water/cement ratio	≥0.5:1
Agitator	Capacity	700L
	Rated Rev	36rpm
	Output/pressure	80L/min@5Mpa
Pump(vertical compact hydraulic grout pump)	Diameter	85mm
	Stroke	220mm
	Cycles	38 times/min
Diesel Engine	Power	27KW@1800rpm
Dimension	Dimensions	2400*2150*1700mm
	Weight	1820kg
We could also customize according to your demands.		

GGP400/700/320/100TPI-E Grout Station

- Three cylinders piston pump with single acting to ensure the continuous slurry flowing (small pulse) and not easily leaking;
- Grouting pressure and displacement is adjustable;
- The function switch between mixer and pulping machine is realized by using squeeze switch;
- Triplex single acting reciprocating piston pump acted as universal grouting applications;
- Easy to operate and maintain;
- Up to 5mm particle size.



Type		GGP400/700/320/100TPI-E			
Mixer	Volume	400L			
	Speed	1500rpm			
Agitator	Volume	700L			
	Speed	45rpm			
	Power	3kw			
Grouting pump	Stroke	110mm			
	Cylinder diameter	80mm			
	Pump speed (Times/min)	214	153	109	78
	Flow(L/min)	320	230	165	118.
	Pressure(MPa)	2.2	3.6	6.2	10
	Power	30kw			
	Dimension	2300*2100x1880mm			
Dimension	Weight	1500kg			

GGP500/700/100PI-D/E Grout Plant

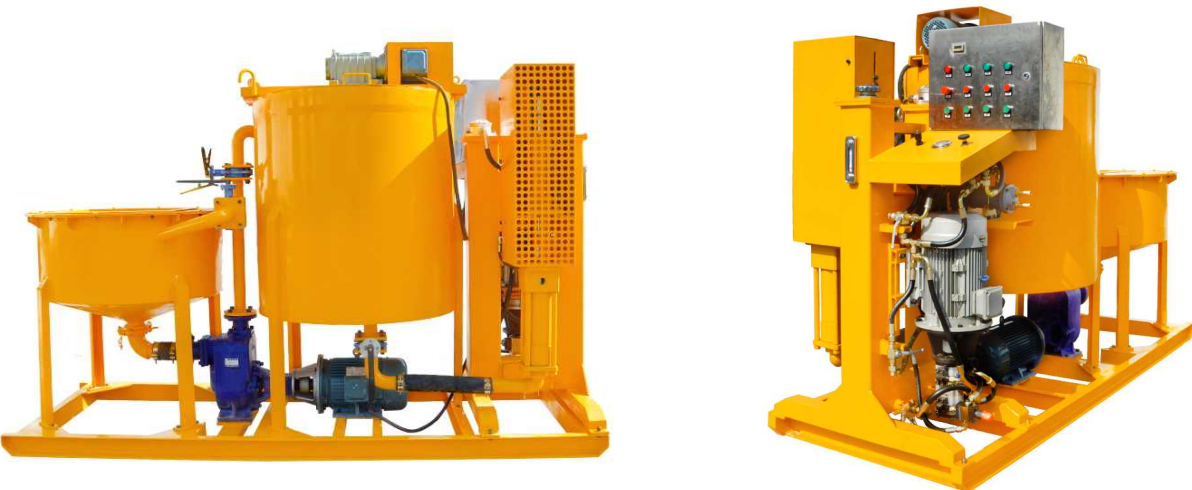
- Pressure and output are step-less variable;
- There is one hand shank between grout mixer and agitator, operate easily, safe and reliable;
- Operation and maintenance are simple.



Type		GGP500/700/100PI-	
		-D (diesel type)	-E (electrical type)
Grout Plant Model	Dimensions	2900*1960*1550mm	2700*1750*1650mm
	Weight	1790kg	1440kg
	Power	25kw 2200rpm	7.5+1.5+15kw
Colloidal Grout Mixer	Capacity	500L	
	Output	7m³/h	
	Rated Rev.	1450rpm	
	W/C ratio	≥0.5:1	
Agitator	Capacity	700L	
	Rated rev.	36rpm	
Grout Pump	Pump type	Horizontal piston grout pump	
	Output and pressure	0-100L/min, 0-50bar	

GGP250/700/75PI-E Grout Plant

- Pressure and output are step-less variable;
- One and two-oil gear pump to get large output and high pressure in one pump;
- Lower charging material height for mixer.



	Type	GGP250/700/75PI-E
Grout Plant Model	Dimensions	2710*1100*1820mm
	Weight	1060kg
Colloidal Grout Mixer	Capacity	250L
	Recycling pump	1100L/min
	Suitable water/cement ratio	≥0.5:1
	Motor power	7.5kw
	Rated rev.	1450rpm
Agitator	Capacity	700L
	Motor model	1.5kw
	Rated rev.	36rpm
Grout Pump	Pump type	Vertical piston grout pump, two oil gearbox
	Output and pressure	0-75L/min, 0-50bar (High-speed) 0-40L/min, 0-100bar (Low-speed)
	Power	7.5kw

GGP300/300/75PI-E Grout Plant

- Hydraulic reversing and Hydraulic drive for vertical grouting pump;
- Using rectangular agitator, makes the plant has compact structure, small size;
- with function of record and display grouting pump reciprocating times by a counter;
- With high speed and low speed, by rotating ball valve switch.



	Type	GGP300/300/75PI-E
Grout Plant Model	Dimensions	2330*1260*1790mm
	Weight	1125kg
Colloidal Grout Mixer	Capacity	300L
	Output	4.5m³/h
	Power	7.5kw, 1450rpm
	Rated Rev	1450rpm
	W/C	≥0.5~1
Agitator	Capacity	300L
	Rated Rev.	36rpm
	Power	1.5kw
Grout Pump	Pump type	Vertical piston grout pump
	Output and pressure	0-75L/min,0-50bar (High-speed) 0-38L/min,0-100bar (Low-speed)
	Power	11kw

GGP100/150/20PI-E Grout Station

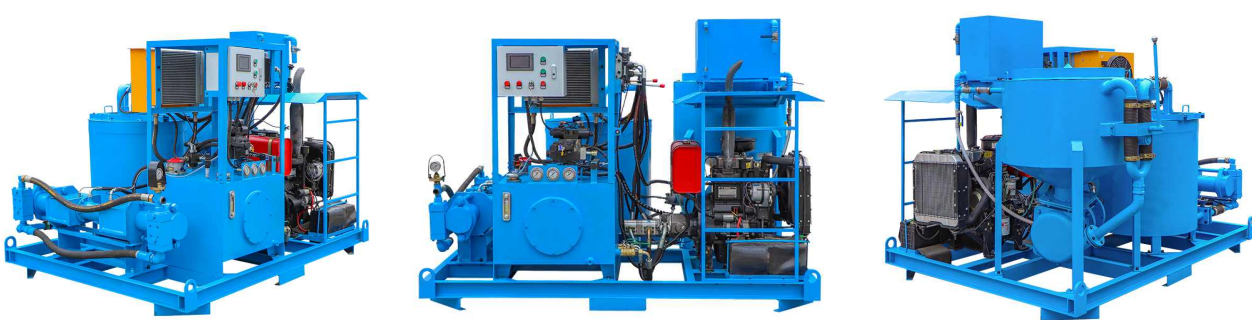
- One and two-oil gear pump to get large output and high pressure in the same grout pump.
- Single piston and two-acting, getting the same volume in both rod and no rod chamber.
- Vertical pump with compact size, up to 5mm particle size.
- Hydraulic drive, safely releasing pressure when pumping block.
- Lower charging material height for mixer, high-speed colloidal grout mixer
- Low flow pressure surge system



Type		GGP100/150/20PI-E
Mixer	Volume	100L
	Speed	1500rpm
	Motor power	5.5kw
Agitator	Volume	150L
	Speed	36rpm
	Motor power	1.5kw
Grouting pump	Pump pressure and output	20L/min @ 43bar (High-speed)
		10L/min @100bar (Low-speed)
	Motor power	5.5kw
Dimension	Dimension	2200×1000×1850mm
	Weight	900kg

GGP250-350-100PI-D Grouting Pump

- Diesel and full hydraulic driven, PLC and HMI control.
- The function switch between mixer and agitator is realized by squeeze handle switch.
- Double cylinders piston pump, continuous slurry output.
- Grouting pressure and output are step-less adjustable.
- Over hydraulic oil temperature protection.
- Recording and displaying grouting pump reciprocating times by a counter.



Type		GGP220/350/100PI-D
Mixer	Volume	250L
	Speed	1500rpm
Agitator	Volume	350L
	Speed	36rpm
Grouting pump	Type	Hydraulic Two Cylinder Piston Pump
	Pump pressure	0-100bar
	Pump output	0-100L/min
Dimension	Dimension	2500×2200×1820mm
	Weight	1550kg
Diesel engine		25Kw@2200r/min

GGP400/80 PL-E Grout Station

- Grouting pressure and displacement is adjustable;
- The function switch between mixer and grout pump is realized by using squeeze switch;
- The vertically plunger pump is an universal application for grouting;
- Easy to operate and maintain;
- Up to 5mm particle size.



Type		GGP400/80 PL-E	
Mixer	Volume	400L	
	Speed	1450rpm	
Grouting pump	Stroke	220mm	
	Cylinder diameter	120mm	
	Flow	80L/min	60L/min
	Pressure	2.4MPa	5MPa
	Power	15kw	
Dimension	Dimension	2450×1200×1750mm	
	Weight	980kg	

GGP300/300/300/70/80PI-E Mortar Grout Plant

- Grouting pressure, output is stepless adjustable;
- Continuous output with small pulse;
- High speed vortex mixer ensures mix quickly and evenly;
- Mixer and agitator switch by using squeeze handle, it is safe, reliable and easy to operate;
- HMI interface, flow and pressure can be visualized.



Type		GGP300/300/300/70/80PI-E	
Mixer	Capacity	300L	
	W/C ratio	0.5~1	
	Rate Rev.	1450rpm	
	Power	7.5Kw	
NO.1Agitator	Capacity	300L	
	Rate Rev.	49rpm	
	Power	2.2Kw	
NO.2Agitator	Capacity	300L	
	Rate Rev.	36rpm	
	Power	1.5Kw	
Pump	Type	Mortar Pump	
	Output	Max 70L/min	
	Pressure	Max 8Mpa	
	Power	11Kw	
Power requirements		Voltage 3 Phase 380V,50Hz	
Dimension		2800×1900×1650mm	
Weight		1350Kg	

GGP220/300/300PI-E Mortar Grout Plant

- GGP220/300/300PI-E mortar grout splant is designed based on high shear mixer and mortar mixer; It is suitable for making cement mixture and mortar cement mixture;
- Grouting pressure and output are step-less adjustable;
- Mixer and agitator switch by using squeeze handle, it is safe, reliable and easy to operate;
- The motor has an overload protection function;
- It has wrong operation safety protection device. When the vibrating screen mesh is taken up, the machine will stop. Flameproof electric cabinet, protection grade IP56.



Type		GGP220/300/300PI-E
Grout Plant Model	Dimensions	2350*1830*1600mm
	Weight	1275kg
Colloidal Grout Mixer	Capacity	220L
	Output	4m³/h
	Power	5.5kw
	Rated rev.	1450rpm
	W/C ratio	≥0.5:1
No.1 Agitator	Capacity	300L
	Rated rev.	49rpm
	Cement/Sand	≥ 1:1
	Power	3kw
No.2 Agitator	Capacity	300L
	Rated rev.	36rpm
	Power	3kw
Grout Pump	Pump type	Mechanical transmission, plunger pump
	Max. output	50L/min
	Max. pressure	15bar
	Power	4kw

GGP400/700/80PL-D/E Grout Plant

- Pressure and displacement are step-less adjustable;
- Mixer and agitator switch by using squeeze handle, it is safe, reliable and easy to operate;
- The motor has an overload protection function;
- Hydraulic system has oil temperature overheating protection system;
- With high-speed, low-speed mode, by using ball valve to achieve two-function switch.



Type		GGP400/700/80PL-	
		-D (diesel type)	-E (electrical type)
Grout Plant Model	Dimensions	3000*2000*1700mm	2500*2200*1730mm
	Weight	2100kg	1350kg
	Power	32kw	7.5+1.5+15kw
Colloidal Grout Mixer	Capacity	400L	
	Output	6m³/h	
	Rated Rev.	1450rpm	
	W/C ratio	≥0.5:1	
Agitator	Capacity	700L	
	Rated rev.	36rpm	
Grout Pump	Pump type	Vertical plunger grout pump	
	Output and pressure	0-80L/min, 0-25bar (High-speed)	
		0-58L/min, 0-45bar (Low-speed)	

GGP200/300/100PI-D/E Grouting Plant

- Linked switch between mixer and agitator;
- Yuken reversing valve for hydraulic system of grout pump;
- Oil temperature gauge can automatically control cooler fan working in normal temperature range, if temperature is too high, the machine will stop work automatically;
- Diesel engine adopts air cooling technology, truck mounted type, more easily to move.



Type		GGP200/300/100PI-	
		-D (diesel type)	-E (electrical type)
Grout Plant Model	Dimensions	4130*1850*2500mm	2400*2300*1620mm
	Weight	2795kg	1320kg
	Power	34kw, 2200rpm	7.5+1.5+11kw
Colloidal Grout Mixer	Capacity	200L	
	Mixer production	4m³/h	
	Circulation capacity	1100L/min	
	W/C ratio	≥0.5:1	
	Mixer hydraulic motor	1450rpm	
Agitator	Capacity	300L	
	Agitator hydraulic motor speed	36rpm	
	Water tank	60L	
Grout Pump	Pump type	Horizontal piston grout pump	
	Max. output	100L/min	
	Working pressure	100bar	

GGP800/1200/200PI-D Grout Plant

- 69KW air cooling diesel engine as the power, it is suitable for field construction;
- Pump output is 0-200L/min. Pump pressure is 0-5Mpa. All step-less adjustable;
- The latest improvement design of valve chamber: It is quickly convenient cleaning;
- Mixer and agitator use stainless steel material;
- Simple structure, light weight, easy maintenance.



Type		GGP800/1200/200PI-D	
Grout Plant Model	Power	69kw, 2150r/min	
	Dimensions	3500*2240*1920mm	
	Weight	2460kg	
Colloidal Grout Mixer	Capacity	800L	
	Output	15m³/h	
	Suitable water/cement ratio	≥0.5:1	
	Rated rev.	1500rpm	
	Capacity	1200L	
Agitator	Motor model	2w-400	
	Rated rev.	54rpm	
Grout Pump	Pump type	Horizontal piston grout pump	
	Output	0-200L/min	
	Pressure	0-50bar	

GGP800/1200/130H-E Grout Plant

- Squeeze hose pump, flow is adjustable. Hose is the only spare part. It is easy to operate and maintenance;
- Butterfly connection mixer and agitator, flexible switching;
- Imported electrical components, it is safe and reliable;
- High-power and high-speed eddy current pulping, it is fast and evenly.



	Type	GGP800/1200/130H-E
Grout Plant Model	Dimensions	2900*1920*1860mm
	Weight	1770kg
Colloidal Grout Mixer	Capacity	800L
	Power	15kw
	Rated rev	1450rpm
	W/C ratio	≥0.5:1
	Mixer type	high shear
Agitator	Capacity	1200L
	Rated rev.	36rpm
	Power	2.2kw
Grout Pump	Pump type	Hose type grout pump
GH65-680B Model	Output	30-130L/min
	Working pressure	15bar
	Power	7.5kw

GGP300/350/85PL-E Grout Plant

- Have low pressure and high pressure, step-less speed regulation;
- Yuken relief valve and directional valve for hydraulic system of grout pump;
- Oil temperature gauge can automatically control cooler fan working in normal temperature range, if temperature is too high, the machine will stop work automatically.



	Type	GGP300/350/85PL-E
Grout Plant Model	Dimensions	2100*2030*1700mm
	Weight	1250kg
Colloidal Grout Mixer	Capacity	300L
	Power	9kw
	W/C ratio	≥0.5:1
	Rated rev.	1450rpm
	Volume	350L
Agitator	Power	1.5kw
	Rated rev.	36rpm
Grout Pump	Pump type	Hydraulic plunger pump
	Pressure and Output	85L/min, 24bar (High-speed) 55L/min, 50bar (Low-speed)
	Power	11kw

GGP350/800/70PI-E Grout Plant

- Pump output is 0-70L/min. Pump pressure is 0-7Mpa. All step-less adjustable;
- The latest improvement design of valve chamber: It is quickly convenient cleaning;
- Delivery with special tools. This can ensure change the pistons rapidly, reduce the time of replacing;
- Simple structure, light weight, less spare parts ensure low maintenance costs.



Type		GGP350/800/70PI-E
Grout Plant Model	Dimensions	2590*2100*1980mm
	Weight	1950kg
Colloidal Grout Mixer	Capacity	350L
	Output	5m³/h
	Suitable water/cement ratio	≥0.5:1
	Motor power	15kw
	Rated rev.	1450rpm
Agitator	Capacity	800L
	Motor model	1.5kw
	Rated rev.	35rpm
Grout Pump	Pump type	Hydraulic twin-cylinder piston grout pump
	Output	0-70L/min (70L/min, at 30bar)
	Pressure	0-70bar
	Power	15kw

GGP220/350/50DPI-D Grout Station

- Double cylinders piston pump with single acting to ensure the continuous slurry flowing.
- Grouting pressure and displacement is adjustable.
- With pressure, hydraulic oil temperature and flow sensors, over hydraulic oil temperature protection.
- Diesel and full hydraulic driven, PLC and HMI control.
- Air cooling and water cooling for the hydraulic.
- The grouting/ injection recorder with computer is optional.



Type		GGP220/350/50 DPI-D
Mixer	Volume	220L
	Speed	1500rpm
Agitator	Volume	350L
	Speed	36rpm
Grouting pump	Pump pressure	0-30bar
	Pump output	0-50L/min
Dimension	Dimension	2400×2000×1620mm
	Weight	1550kg

GGP250/350/100PI-D Grout Plant

- Yuken relief valve and directional valve for hydraulic system of grout pump;
- Butterfly valve of mixer and agitator;
- Oil temperature gauge can automatically control cooler fan working in normal temperature range, if temperature is too high, the machine will stop work automatically;
- Operation and maintenance are simple.



Type		GGP250/350/100PI-D
Grout Plant Model	Dimensions	3300*1650*1500mm
	Weight	1400kg
	Diesel engine	25kw/36hp, 2200rpm
Colloidal Grout Mixer	Capacity	250L
	Output (w/c ratio=1)	4m³/h
	Circulation capacity	1200L/min
	W/C ratio	≥0.5:1
Agitator	Capacity	350L
	Rated rev.	36rpm
	Water tank	60L
Grout Pump	Pump type	Horizontal piston grout pump
	Max. output	100L/min
	Pressure	100bar

GMA10 Automatic Grouting Station

- There are two operation modes: automatic mode and manual mode;
- High speed vortex mixer ensures mix quickly and evenly;
- The proportion of materials in the formula can be adjusted freely;
- It can realize automatic configuration and replenishment of materials;
- Flameproof electric cabinet, protection grade IP56.



Type		GMA10
Max. Mixing Capacity		10m³/h
Grouting Pump		2X75L/min@5MPa
Mixer	Capacity	1000L
	W/C ratio	0.5~1
Circulating Pump	Power	15KW
	Rate Rev.	1800r/min
	Flow	1100L/min
Screw feeder	Power	7.5KW
	Delivery volume	50t/h
Water pump	Mode	ISW50-160(2.2KW)
	Flow@head	8.3m³/h@30.2m
Additive pump	Mode	ISW50-125(0.25KW)
	Flow@head	2m³/h@10m
Air compressor	Mode	VA80-3KW
	Exhaust volume	0.3m³/min
Power requirements		Voltage 3 Phase 380V,50Hz
Dimension		3600×2060×2520mm (Screw feeder is not included)
Weight		2820Kg

Note: We can customize according to your requirements.

GMA1200/3000/300H-E Grout Station

- Automatically batching and automatically mixing system;
- high turbulence mixing;
- PLC control system, operation mode can be operated automatically and manually;
- Mixer, agitator, hose pump in one frame base, compact size;
- Heavy duty industrial hose pump.



Type		GMA1200/3000/300H-E
Weighting	Sensor	S-type tension pressure sensor
	Load	800Kg
	Output Signal	Current signal
	Vibration Motor	24V, 4KN, 0.37Kw
Mixer	Volume	1200L
	Slurry Pump Power	11Kw
	Output	80m³/h
Agitator	Volume	3000L
	Geared Motor Power	3KW
	Speed	45rpm
Hose pump	Output	300L/min
	Pressure	1.6MPa
	Power	18.5kw
Air compressor		2.2kw
Power supply		220V(380V,415V Multiple choices)
Dimension		4150×2100×2750mm
Weight		4000kg

GGH95/165PL-E High Pressure Grouting Pump

- Simple structure, light weight, easy maintenance;
- With the function of record and display grouting pump reciprocating times by a counter;
- The motor has an overload protection function. Hydraulic system with oil temperature overheating;
- Grouting pressure, displacement is step-less adjustable;
- Double grouting plungers, continuous output flow with less pulse;
- Less spare parts ensure low maintenance costs;
- Electric motor and hydraulic driven. Anytime, overpressure occurred, the hydraulic safety protection.



Type	GGH95/165PL-E
Plunger diameter	85mm
Plunger stroke	300mm
Adjustable pressure	0-16.5Mpa
Adjustable flow rate	0-95L/min
Discharge pipe size	G1 1/4"
Inlet pipe size	G2"
Oil tank	200L
Power Unit	37KW, 3-400V 50Hz
Max. grain size	2mm
Working pressure	16.5Mpa
Weight	1400kg
Overall dimensions	3760x1480x750mm

GGM80/50PLD-E Double-Plunger Hydraulic Grout Pump

- Comparing with the piston pump system, the plunger system does not require any close tolerance parts such as cylinders or precise piston seals, etc. The plunger is sealed by a simple maintenance-free seal;
- Hydraulic drive safely releasing pressure when pumping block;
- Ball valve, up to 8mm particle size;
- Stainless steel frame electric box with water proof button.



Grout pump type	GGM80/50PLD-E
Rated output	0-80L/min
Rated pressure	0-50bar
W/C ratio	≥0.5:1
Plunger dia.	85mm
Stroke	190mm
Inlet dia.	2"
Outlet dia.	BSP1.5"
Power unit	11kw
Transmission	Hydraulic drive
Max. particle size	8mm
Chassis	Skid
Note: double cylinders double plunger vertical type pump	
Pressure and flow could be adjustable step-less	

GGH75/100 PI-E High Pressure Vertical Grout Pump

- Compact structure, light weight, easy operate, low maintenance cost;
- With digital display counter: it can display at any time, and can accumulate work times;
- Flow and pressure can be adjusted step-less;
- With full-hydraulic shaft device, stable and reliable operation;
- Cooling type: water-cooling and air cooling; Suitable for hot and cold areas.



Grout pump type	GGH75/100 PI-E
Piston diameter	100mm
Piston stroke	150mm
Pressure and flow	Lower pressure: 0-50bar/725psi 0-75L/min
	High pressure: 0-100bar/1450psi 0-40L/min
Discharge pipe size:	M27*2
Inlet pipe size:	G2"
Power unit	7.5kw
Chassis	Skid
Weight	390kg
Overall dimension	1040*550*1650mm
Note: Chassis: Skid or Tyre	
We also could according to your demands to customize	

GGP120/30PI-E Electric grout pump

- Double cylinders piston pump, continuous flowing, small pulse;
- Air cooler and water cooler dual cooling;
- Hydraulic system with oil temperature protection;
- Grouting pressure and displacement steplessly adjust;
- Solid State Relay, PLC and HMI control.



Type		GGP120/30PI-E
Hydraulic system	Working pressure	10MPa
	Number of reciprocation	42 times
Piston pump	Cylinder diameter	110mm
	Piston stroke	160mm
	Displacement @ pressure	120L/min@3MPa
Motor	Power	15kW
	Voltage	3 phase,380V/415V/440V,50Hz
Overall Dimension(L×W×H)		1700×945×920mm
Weight		740kg

GGH70 & GGH100 Series High Pressure Grout Pump

- With full-hydraulic shaft device, reliable operation;
- Single piston with double acting pump, more stable;
- Compact structure, light weight, easy operate, low maintenance cost;
- Ball valve, up to 8mm particle size;
- Voltage could be customized;
- Diesel engine drive type for option.

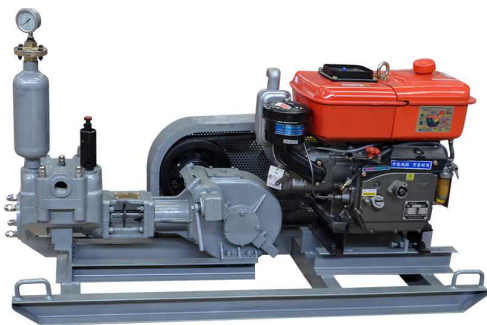


Grout pump type	GGH70/100PI-E	GGH100/100PI-E
Rated output	0-70L/min	0-100L/min
Rated pressure	100bar (1450PSI)	100bar (1450PSI)
Cylinder dia.	110mm	110mm
Stroke/Minute	31	45
Inlet dia.	38mm	38mm
Outlet dia.	32mm	32mm
Power unit	7.5kw	11kw
Transmission	Hydraulic drive	Hydraulic drive
Chassis	Skid	Skid
Weight	450kg	580kg
Overall dimensions	1505*770*1110mm	1505*770*1110mm
Note: Single or Double Passageway are optional; Chassis: Skid or Tyre		

Mini grout pump



GHG-10 manual grout pump
Pressure: 10Bar
Flow: 10L/min
Cylinder dia.: 110mm
Dimension: 980x290x590mm
Weight: 40kgs



GDM130/20 Grout pump
Pressure: 20Bar
Flow: 130L/min
Cylinder dia.: 75mm
Power unit: 10hp, diesel engine
Dimension: 1400*600*1000mm



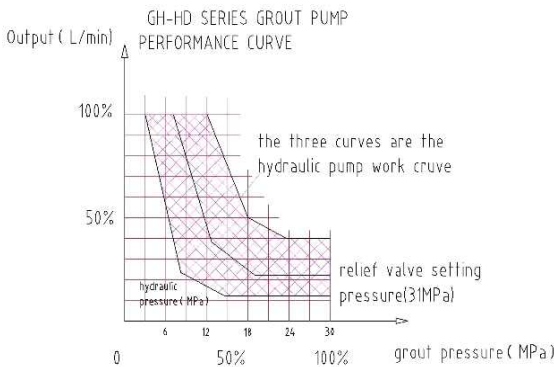
GDM60/40 Grout pump
Pressure: 40Bar
Flow: 60L/min
Cylinder dia.: 75mm
Power unit: 5.5 kw
Dimension: 1400*600*1000mm



GGP10/40PI-E Grout pump
Pressure: 0-40Bar
Flow: 0-10L/min
Cylinder dia.: 63mm
Power unit: 3kw
Dimension: 900*500*1450mm

GH-HD Series Dual Slurries Hydraulic Grout pump

- Suitable for high pressure and big flow grouting plugging projects;
- Could grouting single-liquid, dual-liquid and chemical liquid;
- Pump and pressure could be adjustable, flow from 40-1000L/Min;
- Pressure from 60-500Bar for option.



Power(kw)	Model	Output		Pressure
		L/min	m³/h	bar
18.5	GH210/9-18.5HD	210	12.6	90
	GH150/14-18.5HD	150	9.0	140
	GH120/17-18.5HD	120	7.2	170
	GH100/20-18.5HD	100	6.0	200
	GH90/23-18.5HD	90	5.4	230
22	GH320/8-22HD	320	19.2	80
	GH270/9-22HD	270	16.2	90
	GH180/14-22HD	180	10.8	140
	GH140/18-22HD	140	8.4	180
	GH120/20-22HD	120	7.2	200
	GH100/24-22HD	100	6.0	240
	GH80/34-22HD	80	4.8	340
55	GH700/8.5-55HD	700	42	85
	GH280/22-55HD	280	16.8	220
	GH140/44-55HD	140	8.4	440

Gaodetec also have many other types for option, just please tell us what's the pressure and flow do you demand

XTB Series High Pressure Jet Grouting Pump

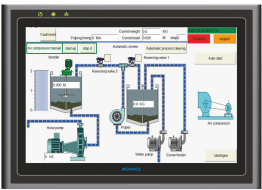
- Instantaneous flow display and cumulative function;
- The new seal greatly extend the service life, easy to replace;
- Without mechanical gearbox, clutch and other multi-fault transmission parts, this makes the pump size smaller, light weight. Compact structure and has high reliability;
- A comprehensive protection control for lose power, lack of phase, overvoltage, under-voltage, overcurrent, torque, pump pressure and other comprehensive protection control;
- Widely used for ground treatment and stabilization, foundation anti-seepage curtain, slope soil retaining cofferdam anchorage, mine stoppage and the wellbore wall construction projects. It is also widely used in highway, railway, mine, national defense and other fields.



Model	XTB-280	XTB-220	XTB-2B
Plunger dia.(mm)	85	70	45
Plunger stroke (mm)	150	135	120
Max. flow (L/min)	250	160	114
Max. pressure (Mpa)	45	45	50
Rated power (kw)	200	160	90
Inlet diameter	2"	2"	2"
Outlet diameter	1"	1"	1"
Weight (kg)	8000	6000	4000
Dimension (mm)	3350*2500*1800	3350*2300*1800	2700*1800*1600

GMA400-700AW Auto Mixing Station

- 3 sets of stable weighing modules auto mixing plant;
- Simple operation interface;
- High-speed colloidal grout mixer;
- Auto high speed grout mixer has remote control of the hose pump.



Specification (with Electric motor drive):

1. Pneumatic Pinch Valve: the slurry flows more smoothly.
2. Ultrasound fluid level meter: height of agitator can be accurately measured.
3. Variable-frequency Drive: all motor can be output with variable-frequency.
4. PLC+Touch Screen : Manual mode and Fully Automatic mode.
5. Remote control : Control hose pump: Start, Stop, Accelerate, Deceleration.

Mixer	Effective volume	400L
	Max.Mixing Capacity	10m³/h
Centrifugal Pump	Motor Power	7.5Kw
	Rotating Speed	1450r/min
	Circulation Capacity	1400l/min
Agitator	Effective volume	700L
	Motor Power	2.2Kw
Water Supply System	Motor Power	1.5Kw
	Displacement	8.8m³/h
	Head	21.5m
Air Supply System	Motor Power	1.5Kw
	Displacement	0.15m³/h
Control System	Mode	PLC
	Power	DC 24V
Dimension(L×W×H) without Screw @Weight		2500×2100×1900mm@1000Kg
Dimension(L×W×H) with Screw @Weight		3800×2100×2720mm@1280Kg

We can customize our product by your needs

GMA Series High Shear Grout Mixer

- One-man operation;
- Extremely fast mixing;
- No seals to wear out from grout;
- Simple grout transfer from mixer to agitator.



GM500E
Mixer volume 500L
Power 7.5kw



GM400D
Mixer volume 400L
Power 10hp



GMA400-700E
Mixer volume 400L
Agitator volume 700L
Power 7.5+1.5kw



GMA500-1000E
Mixer volume 500L
Agitator volume 1000L
Power 7.5+1.5kw



GMA300-650D
Mixer volume 350L
Agitator volume 650L
Power 18hp



GMA850-1500E
Mixer volume 850L
Agitator volume 1500L
Power 11+3kw

